

Crown Commercial Service.

Crown
Commercial
Service
Supplier

SouthernsBroadstock

Lot 8 (RM6119)

Supplier Catalogue (Revision J)

Contents.

| | |
|-------------------------------------|----|
| What we do. | 03 |
| Awards & accreditations. | 04 |
| Responsible and sustainable. | 05 |
| Specialist services. | 06 |
| Social values & Excellence academy. | 07 |
| Inclusive design. | 08 |
| Your specification. | 09 |

Document Information.

| | |
|-----------------------------------|---------------------------|
| Client: Crown Commercial Service | CCS Sector Leader: RM |
| Project: Lot 8 (RM6119) | Designer: LH |
| Design Reference: MK00005 (13247) | Revision: B |
| Document Type: Product Book | Revision Date: 26/09/2022 |
| First Issue Date: 24/01/2020 | Designer: LH |

Creating the space to flourish.

We are one of the UK's leading furniture, fixtures and equipment manufacturers and supply specialists.

We manage complex customer schemes across all sectors delivering innovation and optimising costs without compromise.

Our combined strengths in design, manufacturing and end-to-end service delivery make Southernsbroadstock a comprehensive, big thinking FF&E specialist.

Ensuring spaces have the right resources to both support and inspire your people demands specialist expertise and knowledge. That's what we do, day in, day out at Southernsbroadstock.

What we do.

From a single classroom to a complete, progressive workplace transformation, our solutions cover the full spectrum, across every sector.

As a cohesive unit, we can create captivating new environments for Higher Education, Corporate and Public Sector. Designing and building bespoke furniture palettes for the entire industry.



Partnership and consultancy.

We strongly believe in working collaboratively with our clients. It's vital we understand not just your space but the entire building we are designing for. We also work hard to understand the needs of the stakeholders, the time and budget considerations together with the individual project needs and requirements to deliver a truly world class solution.



Spacial planning and design.

Our talented team of space planners and interior designers have an in-depth understanding of workspaces and environments. By embracing the latest software – such as 3D visualisation and 3D walk-throughs, animation and BIM Level 2 accreditation – they specialise in creating inspiring spaces that can positively impact on morale, retention and productivity.



Manufacture and procurement.

Having access to the UK's largest supply chain network in our market means we can provide clients with access to an unrivalled range of products with significant supply chain spending power. We invest heavily in our own manufacturing capabilities and the most up-to-date technology, so we can offer clients an efficient and flexible in-house manufacturing capability.



Project Management.

Our specialist knowledge extends across a range of sectors, from commercial, retail, hospitality, leisure and residential to healthcare, education and Crown procurement; each having its own dedicated expert teams to ensure a single point of contact to provide on-going support across the whole product life-cycle.



Delivery and installation.

Our nationally accredited and UK-wide delivery and installation team works to the highest standards to ensure this key aspect of your project runs effortlessly, on time and on budget. It's only by investing in our own in-house team that we can guarantee the exacting quality you demand.



Furniture management and after-care.

Our highly capable customer service team is always on hand to provide an unrivalled delivery, installation and post project experience. These highly competent and dedicated people ensure we take good care of any queries or questions you may have through the whole life-cycle of the project.



Awards and accreditations.

We are proud to be named preferred suppliers and framework partners by some of the country's most discerning companies and consortia.

To earn this status, all of our products and services must meet the most stringent standards for safety and sustainability. To keep it, we're constantly investing in the future. We hold BIM Level 2 accreditation for Design & Construction and have multiple ISO accreditations for our in-house manufacturing.

Above all, we earn recognition by delivering results. Our work has won multiple awards for design and commercial interiors.

Current frameworks agreements include; Crown Commercial Service, Department for Education, NEUPC, NWUPC and NHS Supply Chain.

Our awards and accreditations:





Responsible and sustainable.

In our own manufacturing we use **only sustainable materials**. Our strong supply chain partnerships mean we can demand the same sustainability of everything else we source and specify.

But beyond the products themselves, we also use biomass generators and carbon neutral boilers. Our major manufacturing plant even burns its own cut-offs to heat the factory. We are also FSC® certified.

Handling logistics and distribution in-house means we can cut our carbon footprint even further, and we carry through our commitment to sustainable working by blanket-wrapping furniture for delivery, instead of wasting single-use packing materials.

As part of our managed services agreements, we also promote recycling and re-manufacturing. To first prolong the life of our products and then make sure as much of them as possible are reused.



Specialist services.

Whatever the space, we can deliver a world-class furniture solution. We have over 35 years of experience in successfully delivering innovative interior design and furniture solutions across a broad range of sectors.



Taking a collaborative approach to planning and design is the key to a successful project. Our first step is to understand your project requirements. This way, we can work efficiently and harmoniously to deliver the solution within your time and budget constraints.

Our space planners and interior designers have an outstanding knowledge of interior environments. Using the latest design software, we create inspirational spaces that positively impact morale, retention and productivity.

Having access to the UK's largest supply chain network in our market is a huge advantage. We can provide clients with an unrivalled breadth of products with significant supply chain spending power.

We invest heavily in our own manufacturing capabilities and the most up-to-date technology, meaning we can offer our clients an efficient and flexible in-house manufacturing capability.

With over three decades of experience in project management across a range of spaces including commercial, retail, hospitality, leisure, healthcare and residential environments; we are more than capable of delivering exceptional results for your project.

We operate a UK-wide hub model, ensuring the highest standards with increased efficiency, guaranteeing the quality that you deserve at crucial stages of your project.

We take pride in looking after our clients throughout the whole lifecycle of your project. Our Customer Service and Aftercare team are always available to help during and after project completion. We're not satisfied until our clients are completely happy with their furniture solution.

If you need any more information, please contact info@southernsbroadstock.co.uk

Social values.

Southernsbroadstock takes its social responsibilities seriously and aims to manage its operations in a sustainable, economically feasible and socially responsible way.

Our objective is to:

- Help our local communities to manage and recover from the impact of COVID-19.
- Tackle economic inequality by creating new jobs and increasing our supply chain resilience.
- Fight climate change and minimise our environmental impact.
- Improve the health and wellbeing of our staff and communities.
- Provide equal opportunities throughout Southernsbroadstock and our supply chain.



Excellence academy.

Our aim is to be the best every single time. Through our Excellence Academy we are continually reviewing our systems, process and people.

Our approach is focussed on driving innovation, creating service efficiencies, and ensuring we are providing our customers the best possible service.

Inclusive design.

The guiding principle of Inclusive Design is to level the playing field for everybody regardless of their situation. Following an extensive research project, we have developed a creative framework that ensures we are designing for the widest possible range of people.

Human beings are incredibly diverse, as is their behaviour. As built environment professionals we have the opportunity to break down barriers and exclusions. By employing our Inclusive Design process, we are able to identify these barriers, fully understand their impact, and provide solutions accordingly.

We collaborate with our clients throughout the process, building a brief to develop environments that deliver dignity, confidence, convenience and comfort.



By designing and managing the built environment inclusively, the frustration and hardship experienced by many can overcome, with the benefits and improved efficiencies having a positive impact for every single user, in addition to the organisation.

To start your Inclusive Design journey, please contact info@southernbroadstock.co.uk.

We offer support to develop every aspect of your Inclusive Environment.

Equitable use.
Does the design of your space come across as useful and enticing to those with diverse abilities?

Flexibility in use.
Does your design accommodate a wide range of individual preferences and abilities?

Intuitive use.
Is your design easy to understand regardless of the user's skills or experience?

Perceptible information.
Does the design communicate necessary information, regardless of the user's sensory abilities?

Tolerance for error.
Is your design minimising risks due to the possibility of accidental or unintended mistakes?

Physical accessibility.
Can the design be used efficiently and comfortably with minimum effort and fatigue?

Size and space for approach and use.
Are you providing enough space for reach and manipulation regardless of the user's body size, posture or mobility?



Monitor Arms

In Single, Double or Quadruple Configurations.

| | | |
|---|---|---|
| CCS Reference. FOCUS-01-MS UNSPSC. 43212002 Task or loose. Loose CCS product group level 2. Accessories. | Specification. <ul style="list-style-type: none">· Available in single, double, triple or quadruple monitor configurations· Aluminium monitor arms to be fitted to work tops as required· Fixed to workstation via clamp mechanism· Arm rotation to allow for monitor position in landscape and portrait format· Monitor arms to be able to move independently of each other and prevent transference of movement or clashing with neighbouring user equipment, with locking mechanism· Stop Function - 180/360 degree capability· Monitor Head - VESA 75 & 100 compliant· Weight per arm of 3-9kg· Warranty of 8 years· No visible logo or branding tags, buttons, or plates | Dimensions. Reach - 458mm Finishes. Reach - 458mm Accreditation. N/A Environment. Recycled material content: 12% Recycleability of product: 12% |
| Supplier Code. Flo Manufacturer. CBS Lead Time. 4-6 Weeks. | | |

Closed Storage Units.



CCS Reference. FOCUS-01-RMC

UNSPSC. 56101530

Task or loose. Loose

CCS product group level 2.
Storage.

Supplier Code.

SFLM3DSD

Manufacturer.

Silverline

Lead Time.

4-6 Weeks.

Specification.

- Locking 2/3 drawer or tambour units
- All storage to be at a maximum height of 1600mm where required in open plan office areas
- Additional storage at 1000mm, 1200mm and 1400mm high as required within cellular/meeting rooms
- All storage units should be within the same design range
- Internal components within the storage units to include (but not limited to):
 - plain shelves
 - combination shelves
 - pull-out shelves
 - slotted shelves
 - lateral rails
 - lateral shelves
 - pull-out filing frames
 - pull-out drawers
 - drawer dividers
- Warranty of 8 years
- No visible logo or branding tags, buttons, or plates

Dimensions.

Dimensions: W800 and W1000 X D500.
All storage to be at a maximum height of 1600mm where required in open plan office areas.

Additional storage at 1400mm, 1200mm and 1000mm high as required within cellular offices/meeting rooms.

H1000 x 2 drawer x 3 drawer x tambour unit
H1200 x 2 drawer x 3 drawer x tambour unit
H1400 x 2 drawer x 3 drawer x tambour unit
H1600 x 2 drawer x 3 drawer x tambour unit

Finishes.

Powder-coated metal to match the colour finish of workstation frame.

Accreditation.

ISO 14001

Environment.

Recycled material content: 30%
Recycleability of product: 98%

Closed Storage Units.



Storage Unit With Planters.



CCS Reference.

FOCUS-01-RMCa

UNSPSC. 56101530

Task or loose. Loose

CCS product group level 2.

Cupboard.

Supplier Code.

SFLM3DSD +

PBLM120SDLI**Manufacturer.**

Silverline

Lead Time.

4-6 Weeks.

Specification.

- Locking 2/3 drawer or tambour units
- Plant liners to be provided to all planters
- All storage to be at a maximum height of 1600mm where required in open plan office areas
- Additional storage at 1000mm, 1200mm and 1400mm high as required within cellular/meeting rooms
- All storage units should be within the same design range
- Internal components within the storage units to include (but not limited to):
 - plain shelves
 - combination shelves
 - pull-out shelves
 - slotted shelves
 - lateral rails
 - lateral shelves
 - pull-out filing frames
 - pull-out drawers
 - drawer dividers
- Warranty of 8 years
- No visible logo or branding tags, buttons, or plates

Dimensions.

Depth : 500mm

Height : 1000/1200/1400/1600mm

Finishes.

Powder-coated metal to match the colour finish of workstation frame

Accreditation.

ISO 14001

Environment.

Recycled material content: 30%

Recycleability of product: 98%

Storage Unit With Planters.





Fully Ergonomic Task & Reception Chair.

CCS Reference. FOCUS-01-STC, INTER-01-STC, DONOT-01-STC, AMENI-01-STC

UNSPSC. 56101504

Task or loose. Task

CCS product group level 2. Seating.

Supplier Code.

DEL4/SS/WHH

Manufacturer.

Southernsbroadstock LTD

Lead Time.

4-6 Weeks.

Specification.

- Technical fabric mesh back with adjustable seat slide.
- Upholstered Combustion Modified High Resilience (CMHR) foam seat base.
- Minimum weight capacity of 23.5 stone and 30 stone.
- 5 star base with soft break castors (60mm).
- Adjustable arms with 180 degree pad rotation.
- Black frame and arms.
- Lumbar Support – adjustable lumbar pad (100mm of travel).
- Synchronous and weight balancing action with up to 20 degrees of incline - with locking capability.
- All adjustment mechanisms to be accessible from the side of the chair only.
- Warranty of 8 years.
- No visible logo or branding tags, buttons, or plates.

Dimensions.

Adjustable Seat Height: 400mm - 530mm.
Adjustable Arm: H100, W35 option available.
Pad rotation: 180 degrees.
Lumbar Support range up to 100mm.

Finishes.

Fabric Details: 100,000 rubs (Martindale).
Manufacturer fabric bands 3, 2, 1+, 1 Upholstered seat.
Colourways: From a range of standard colours.

Accreditation.

BS EN 13351-2

Environment.

Recycled material content: 18%
Recycleability of product: 98%



PLEASE NOTE: IMAGE SHOWS OPTIONAL DESK TOP SCREENS.



Work Bench.

CCS Reference. FOCUS-01-TWB

UNSPSC. 56111500

Task or loose. Task

CCS product group level 2.
Benching.

Supplier Code.

MB1616FS / MB16CD

Manufacturer.

SouthernsBroadstock LTD

Lead Time.

4-6 Weeks.

Specification.

- Frame to co-ordinate with height adjustable workstation
- Bench top presented power to be provided (refer to SUNT-03 - power module)
- To include vertical cable management (vertical cable distribution shall allow for flexible, concealed and protect connection from floor box/grommet to horizontal cable management with segregated distribution)
- The top horizontal cable tray overall depth of 120mm from underside of workstation surface to base of tray, clear access from the side of the tray of 80mm.
- Cable basket/tray underneath of each bench surface for horizontal cable management
- Benches to allow integration with monitor arms (refer to FOCUS-01-MS)
- Bench to allow for integration of acoustic and privacy divider screens
- Protective edge-banding
- Warranty of 8 years
- No visible logo or branding tags, buttons, or plates

Dimensions.

1 Person configuration:
W1200 X D800 X H730
W1400 x D800 x H730
W1600 x D800 x H730
2 Person configuration:
W1200 x D1600 x H730
W1400 x D1600 x H730
W1600 x D1600 x H730
4 Person configuration:
W2400 x D1600 x H730
W2800 x D1600 x H730
W3200 x D1600 x H730
6 Person configuration:
W3600 x D1600 x H730
W4200 x D1600 x H730
W4800 x D1600 x H730
8 Person configuration
W4800 x D1600 x H730
W5600 x D1600 x H730
W6400 x D1600 x H730

Finishes.

Top material finish: White or manufacturer standard colour MFC/MDF

Workstation Frame: Powder coated white/anthracite/ black standard matt finish

Accreditation.

BS EN 13351-2

Environment.

Recycled material content: 43%
Recycleability of product: 99%

Work Bench.



PLEASE NOTE: IMAGE SHOWS OPTIONAL DESK TOP SCREENS.





PLEASE NOTE: IMAGE SHOWS OPTIONAL DIVIDING SCREEN.

Height Adjustable Work Station.

CCS Reference. FOCUS-01-TWD, DONOT-02-TWD, BOOKA-01-TWD, INTER-03-TWD

UNSPSC. 56101703

Task or loose. Task

CCS product group level 2. Desking.

Supplier Code.

DSS251616

Manufacturer.

Southernsbroadstock LTD

Lead Time.

4-6 Weeks.

Specification.

- Workstation top presented power to be provided (refer to SUNT-03 - power module)
- To include vertical cable management (vertical cable distribution shall allow for flexible, concealed and protect connection from floor box/grommet to horizontal cable management with segregated distribution)
- To include horizontal cable management (1 x upper level cable tray – and 1 x lower level cable tray)
- The top horizontal cable tray overall depth of 120mm from underside of workstation surface to base of tray, and a clear access from the side of the tray of 80mm.
- The lower horizontal cable tray must have a dust cover and an adequately sized aperture to accommodate adequate cables/equipment as per project requirements
- Cantilevered bench surface to allow for free movement of user without knee clashes – to include anti clash mechanism
- Back-to-back module as standard and single unit as required

- Workstation to allow integration with monitor arms (refer to FOCUS-01-MS)
- Workstation to allow for integration of future privacy and acoustic divider screens
- Protective edge-banding
- Warranty of 8 years
- No visible logo or branding tags, buttons, or plates

Dimensions.

Width: 1200/1400/1600mm
Depth: 800mm
Height: 650-1250mm

Finishes.

Top material/finish: White or manufacturer standard colour MFC/MDF

Base material/finish: Powder coated white/anthracite/ black standard matt finish

1, 2, 4, 6 and 8 person configuration

Accreditation.

BS 527:1

Environment.

Recycled material content: 43%
Recycleability of product: 99%

Height Adjustable Work Station.



PLEASE NOTE: IMAGE SHOWS OPTIONAL DIVIDING SCREEN.



Touchdown High Counter.

CCS Reference. INTER-01-TIM

UNSPSC. BFR REF 2704

Task or loose. Loose

CCS product group level 2.
Desking.

Specification.

- Integral counter top presented power to be provided - refer to Table 1: Power Requirements
- Warranty of 8 years
- No visible logo or branding tags, buttons, or plates

Dimensions.

Width: 2200mm
Depth: 600-800mm
Height: 850-1010mm

Finishes.

Top material/finish: Standard MFC matt

Accreditation.

N/A

Environment.

Recycled material content: N/A%
Recycleability of product: N/A%

Supplier Code.

BFR REF 2704

Manufacturer.

Southernsbroadstock LTD

Lead Time.

4-6 Weeks.



High Stool

With Back Rest.

CCS Reference. INFOR-01-SHC,
INTER-01-SHC, AMENI-01-SHC

UNSPSC. 48102005

Task or loose. Loose

CCS product group level 2.
Seating.

Supplier Code.

Bowcliffe Bar Stool / BOWSTHC,
BOWSTHWD, BOWSTHWD / VA4

Flux High Stool / FLUXHSPS,
FLUXHSPSUP

Manufacturer.

Southernsbroadstock LTD
Origin

Lead Time.

4-6 Weeks.

Specification.

- If metal base, steel rod frame to be polished or the nearest metal finish available
- Incorporate glides at chair base
- With or without arms
- Warranty of 8 years
- No visible logo or branding tags, buttons, or plates

Dimensions.

600-650mm

Finishes.

Seat: Plastic, timber shell or upholstered

Base: Metal/timber legs

Fabric: 60,000 rubs (Martindale)

Manufacturer fabric bands 3, or below

Colourways: C1 colour range

Accreditation.

N/A

Environment.

Recycled material content: 43%

Recycleability of product: 98%

High Stool With Back Rest.



Touchdown Workstation

With/Without Acoustic Dividers.



CCS Reference. DONOT-01-TWB,
INFOR-01-TWB

UNSPSC. 56101706

Task or loose. Task

CCS product group level 2.
Desking.

Supplier Code.

MB1208FS, MB1408FS, MB1608FS

Manufacturer.

Southernsbroadstock LTD

Lead Time.

4-6 Weeks.

Specification.

- Frame to coordinate with sit-stand workstation
- Workstation top presented power to provide 2 x USB power ports, 2 x power point per workstation
- Vertical cable distribution shall allow for flexible, concealed and protect connection from floor box/grommet to horizontal cable management. Shall have segregated distribution.
- Cable basket underneath of each desk surface for horizontal cable management
- Desks to allow integration with monitor arms (refer to FOCUS-01-MS)
- Desk to be integrated with acoustic and privacy divider screens
- Warranty of 8 years
- No visible logo or branding tags, buttons, or plates

- Acoustic dividers to be provided to the depth of the workstation and optional to the width

Dimensions.

Width: 1200/1400/1600mm

Depth: 800mm

Height: 730mm (with 700mm clearance)

Finishes.

Top/material finish: White or manufacturer standard colour MFC/MDF

Base/material finish: Powder coated white/anthracite/ black standard matt finish

Accreditation.

N/A**Environment.**

Recycled material content: 43%

Recycleability of product: 99%

Touchdown Workstation With/Without Acoustic Dividers.



Library Book Shelves.

CCS Reference. DONOT-01-RMC

UNSPSC. 56101530

Task or loose. Loose

CCS product group level 2.
Storage.

Supplier Code.

Library Book Shelves

Manufacturer.

Southernsbroadstock LTD

Lead Time.

4-6 Weeks.

Specification.

- All storage to be at a maximum height of 1800mm where required in open plan office areas
- All storage units should be within the same design range
- Warranty of 8 years
- No visible logo or branding tags, buttons, or plates

Dimensions.

Height: 1400, 1600, 1800mm maximum
Width: 1000mm
Depth: 500 / 800mm

Finishes.

Manufacturers standard finish MFC

Accreditation.

N/A**Environment.**

Recycled material content: 47%
Recycleability of product: 96%



INTER-01-SLC, BOOKA-01-SLC.



CCS Reference. DONOT-01-SLC, INTER-01-SLC, BOOKA-01-SLC, INTER-01-SLCa, BOOKA-02-SLC

UNSPSC. 56101522

Task or loose. Loose

CCS product group level 2. Seating.

Supplier Code.

MT612T

Manufacturer.

Southernsbroadstock LTD

Lead Time.

4-6 Weeks.

Specification.

- Fully upholstered with CMHR molded foam
- Design to be project specific and to add a regional accent
- If project specific, seating heights to be appropriate for the selected activity function
- Warranty of 8 years
- No visible logo or branding tags, buttons, or plates

Dimensions.

Dimensions: Depth: 800mm
Height: 1000mm approx
Seat Height: 500mm

Finishes.

+60,000 rubs (Martindale)
Manufacturer fabric bands 4, 3, 2
Upholstered seat
Colourways: A1, B1, C1 range
Material/finish: Metal or timber legs

Accreditation.

N/A

Environment.

Recycled material content: 34%
Recycleability of product: 97%

Frame Styles



INTER-01-SLC, BOOKA-01-SLC.

High Back Lounge Seating (Small).



CCS Reference. DONOT-02-SLC

UNSPSC. 56101522

Task or loose. Loose

CCS product group level 2.
Seating.

Supplier Code.

MT610

Manufacturer.

Southernsbroadstock LTD

Lead Time.

4-6 Weeks.

Specification.

- Fully upholstered with CMHR molded foam
- Design to be project specific and to add a regional accent
- If project specific, seating heights to be appropriate for the selected activity function
- Warranty of 8 years
- No visible logo or branding tags, buttons, or plates

Dimensions.

Depth: 750mm
Height: 750mm
Seat Height: 500mm

Finishes.

+60,000 rubs (Martindale)
Manufacturer fabric bands 4, 3, 2
Upholstered seat.
Colourways: B1 range.

Accreditation.

N/A

Environment.

Recycled material content: 34%
Recycleability of product: 97%

Frame Styles





Fully Upholstered Chair

5 Star Castor Base.

CCS Reference. DONOT-01-SMC, DONOT-02-SMC, INTER-01-SMC (with arms), INTER-01-SMC (without arms) INTER-01-SMCA (without arms)

UNSPSC. 56101504

Task or loose. Loose

CCS product group level 2. Seating.

Supplier Code.

XIP10ASWUP /XIP11SWUP

Manufacturer.

Southernsbroadstock LTD

Lead Time.

4-6 Weeks.

Specification.

- Height adjustable seat
- Seat tilt tension and tilt limiter - all adjustment mechanisms to be accessible from the side of the chair only
- Seat shell in black/white/metal
- 5 star castor base
- Warranty of 8 years
- No visible logo or branding tags, buttons, or plates

Dimensions.

380-580mm range

Finishes.

Fabric Details: +60,000 rubs (Martindale)
Manufacturer fabric bands 3, 2, 1, 1+,
Fully upholstered
Colourways: B1 colour options

Accreditation.

N/A

Environment.

Recycled material content: 41%
Recycleability of product: 85%



Fully Upholstered High Wing Back Acoustic Chair.

CCS Reference. DONOT-01-SSO

UNSPSC. 56112100

Task or loose. Loose

CCS product group level 2.
Seating.

Supplier Code.

XS-IDY-CCS05+PM1 / XS-IDY-CCS06

Manufacturer.

Southernsbroadstock LTD

Lead Time.

4-6 Weeks.

Specification.

- Power options with or without integrated power module on side of chair (1x power plug and 2x USB) or pose unit as core catalogue item (refer to SUNL-43).
- Seat height should be appropriate for the selected activity function
- Warranty of 8 years
- No visible logo or branding tags, buttons, or plates

Dimensions.

Arm Height: 650mm
Chair Height: 1110mm approx
Seat Height: 500mm

Finishes.

50,000 rubs (Martindale)
Manufacturer fabric bands 3
Colourways: B1 Range

Accreditation.

N/A**Environment.**

Recycled material content: N/A%
Recycleability of product: 42%



Informal Side Table

For Individual Use.

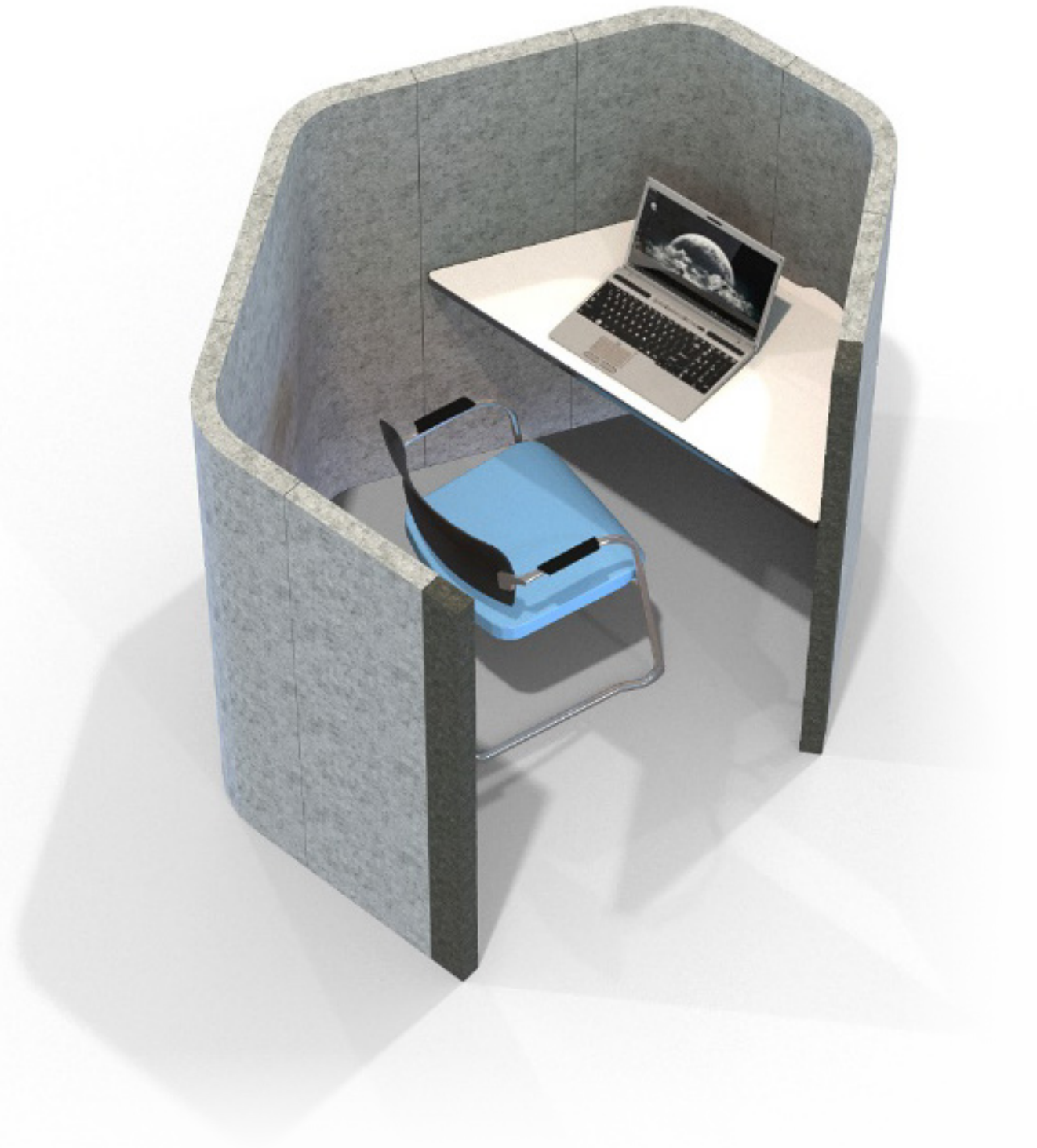
| | | |
|--|--|---|
| CCS Reference. DONOT-01-TCE | Specification. | Dimensions. |
| UNSPSC. 56101719 | <ul style="list-style-type: none">· Base to allow laptop use with soft seating | Width: 500mm Depth: 400mm |
| Task or loose. Loose | <ul style="list-style-type: none">· Warranty of 8 years | Finishes. |
| CCS product group level 2. Desking. | <ul style="list-style-type: none">· No visible logo or branding tags, buttons, or plates | Top material finish: White MFC/MDF/HPL Base material finish: Metal/powder coated |
| Supplier Code. | | Accreditation. |
| LPTE2WH | | N/A |
| Manufacturer. | | Environment. |
| Southernsbroadstock LTD | | Recycled material content: 41% Recycleability of product: 85% |
| Lead Time. | | |
| 4-6 Weeks. | | |



Height Adjustable Side Table.

| | | |
|--|---|---|
| CCS Reference. DONOT-02-TCE | Specification. | Dimensions. |
| UNSPSC. 56101719 | <ul style="list-style-type: none">· Base to allow laptop use with soft seating· Warranty of 8 years· No visible logo or branding tags, buttons, or plates | Width: 500mm Depth: 400mm |
| Task or loose. Loose | | Finishes. |
| CCS product group level 2. Desking. | | Top material finish: White MFC/MDF/HPL Base material finish: Metal/powder coated |
| Supplier Code. | | Accreditation. |
| LPT1WH | | N/A |
| Manufacturer. | | Environment. |
| Southernsbroadstock LTD | | Recycled material content: 41% Recycleability of product: 85% |
| Lead Time. | | |
| 4-6 Weeks. | | |

Work Booth.



CCS Reference. DONOT-01-TWD
BOOKA-03-TWD

UNSPSC. 56101900

Task or loose. Loose

CCS product group level 2.
Seating.

Supplier Code.

STW5-16+STW5-DESK+PM1

Manufacturer.

Southernsbroadstock LTD

Lead Time.

4-6 Weeks.

Specification.

- Fully enclosed with accessible entrance – with central, left and right hand return options
- Table with power and data workstation top access
- Warranty of 8 years
- No visible logo or branding tags, buttons, or plates

Dimensions.

Width: 1200mm
Height: 1800mm max
Table height: 730mm (with minimum 700mm clearance)

Finishes.

Integrated table in white MFC or manufacturer standard colours

Base material/finish: Metal legs

Fabric details: Upholstered

Manufacturer fabric bands 2

Colourways: B1 range fabric

Accreditation.

N/A

Environment.

Recycled material content: 11%
Recycleability of product: 96%



One Person Pod.

CCS Reference. DONOT-02-SSO

UNSPSC. 56112100

Task or loose. Loose

CCS product group level 2.
Seating.

Supplier Code.

PEK/1

Manufacturer.

Boss Design

Lead Time.

4-6 Weeks.

Specification.

- No power as standard - separate power unit/USB to be provided where power is required
- Warranty of 8 years
- No visible logo or branding tags, buttons, or plates

Dimensions.

Width: 1006mm

Depth: 725mm

Height: 1455mm

Seat Height: 440mm

Finishes.

Fabric Details: Fully upholstered

Manufacturer fabric bands 3 or 2 below

Colourways: C1 range fabric

Accreditation.

N/A

Environment.

Recycled material content: 42%

Recycleability of product: 90%



Meeting Table.

| | | |
|--|---|---|
| CCS Reference. DONOT-03-TWD | Specification. | Dimensions. |
| UNSPSC. 5610706 | <ul style="list-style-type: none">· Power is project specific - refer to Table 1: Power Requirements and Table 2: AV Requirements below· Cable management vertical/horizontal to be concealed· Warranty of 8 years· No visible logo or branding tags, buttons, or plates | Width: 1200mm Depth: 700mm Height: 730mm (with 700mm clearance) |
| Task or loose. Loose | | Finishes. |
| CCS product group level 2. Desking. | | Top/Material Finish: White MFC or manufacturer standard colour |
| | Supplier Code. | Accreditation. |
| | MHS25148 | N/A |
| | Manufacturer. | Environment. |
| | Southernsbroadstock LTD | Recycled material content: 43% Recycleability of product: 99% |
| | Lead Time. | |
| | 4-6 Weeks. | |

Upholstered Flexible Soft Seating With Optional Armrests.



CCS Reference. BOOKA-01-SOT

UNSPSC. 48102001

Task or loose. Loose

CCS product group level 2.
Seating.

Supplier Code.

XS-IDY-CCS16-PM1

Manufacturer.

Southernsbroadstock LTD

Lead Time.

4-6 Weeks.

Specification.

- Design to be project specific and to add regional accent
- Soft seating will have optional arm rests at a height of 200mm from the surface of the seat which extend from the back support forwards to cover at least 80% of the depth of the seat
- Upholstery CMHR foam seat
- Power options to be available
- Warranty of 8 years
- No visible logo or branding tags, buttons, or plates

Dimensions.

Seat Height: 400mm
Length approx. 2400mm

Finishes.

Fabric Details: 60,000 rubs (Martindale)
Manufacturer fabric bands 3 or 4
Upholstered
Colourways: A1 Range

Accreditation.

N/A

Environment.

Recycled material content: N/A%
Recycleability of product: 89%

Informal Meeting Chair

Fully Upholstered.



CCS Reference. BOOKA-01-SSC

UNSPSC. 56101504

Task or loose. Loose

CCS product group level 2.
Seating.

Supplier Code.

STW14L

Manufacturer.

Southernsbroadstock LTD

Lead Time.

4-6 Weeks.

Specification.

- Arm height to be complementary with adjacent table height or arm rests at a height of 200mm from the surface of the seat which extend from the back support forwards to cover at least 80% of the depth of the seat
- Warranty of 8 years
- No visible logo or branding tags, buttons, or plates
- 4 metal legs with nylon glides

Dimensions.

Seat Height: 450mm

Finishes.

Fabric Details: +60,000 rubs (Martindale)
Manufacturer fabric bands 2 or 3
Colourways: A1 colour options

Accreditation.

N/A

Environment.

Recycled material content: 41%
Recycleability of product: 85%



Informal Meeting Chair

Fully Upholstered.

CCS Reference. BOOKA-01-SSCa

UNSPSC. 56101504

Task or loose. Loose

CCS product group level 2. Seating.

Supplier Code.

STWL1

Manufacturer.

Southernsbroadstock LTD

Lead Time.

4-6 Weeks.

Specification.

- Timber legs
- Arm height to be complementary with adjacent table height or arm rests at a height of 200mm from the surface of the seat which extend from the back support forwards to cover at least 80% of the depth of the seat
- Warranty of 8 years
- No visible logo or branding tags, buttons, or plates

Dimensions.

Seat Height: 450mm

Finishes.

Fabric Details: +60,000 rubs (Martindale)

Manufacturer fabric bands 2 or 3

Colourways: A1 colour options

Accreditation.

N/A

Environment.

Recycled material content: 43%

Recycleability of product: 85%

Mobile Training Chair.



CCS Reference. BOOKA-01-STC

UNSPSC. 56112100

Task or loose. Loose

CCS product group level 2.
Seating.

Supplier Code.

KTCOLLUP

Manufacturer.

Southernsbroadstock LTD

Lead Time.

4-6 Weeks.

Specification.

- Tablet and open storage shelf below
- Castors
- Weight capacity of 23 stone
- Warranty of 8 years
- No visible logo or branding tags, buttons, or plates

Dimensions.

Seat Height: 450mm

Finishes.

Fabric Details: Manufacturer fabric
bands 1+ or 2 or 3

Colouways: A1 range

Metal/Powder-coated legs

Accreditation.

N/A

Environment.

Recycled material content:42%
Recycleability of product: 95%

Upholstered Stacking Chair

With Metal Base.



CCS Reference. BOOKA-01-STK

UNSPSC. 56101504

Task or loose. Loose

CCS product group level 2.
Seating.

Supplier Code.

FIL03

Manufacturer.

Southernsbroadstock LTD

Lead Time.

4-6 Weeks.

Specification.

- Stackable, with capacity of 20 chairs on trolley
- Glides at chair base
- Warranty of 8 years
- No visible logo or branding tags, buttons, or plates

Dimensions.

Seat Height: 400-460mm

Finishes.

Fabric Details: Manufacturer fabric bands 3,2 or 1+

Colouways:A1 range

Steel rod frame to be polished or the nearest metal finish available

Accreditation.

N/A

Environment.

Recycled material content: 34%

Recycleability of product: 97%

Stacking Chair

With Arms.



PLEASE NOTE: SHOWN WITH OPTIONAL CASTORS

CCS Reference. BOOKA-01-STKa

UNSPSC. 56101504

Task or loose. Loose

CCS product group level 2.
Seating.

Supplier Code.

ADL12A

Manufacturer.

Senator

Lead Time.

4-6 Weeks.

Specification.

- Mesh back
- 4 leg frame to be polished or the nearest metal finish Castors to be applied on a ratio for stacking purposes on overall quantity
- Incorporate glides at chair base
- Warranty of 8 years
- No visible logo or branding tags, buttons, or plates

Dimensions.

Seat Height: 450mm

Finishes.

Fabric Details: Manufacturer fabric bands 3

Colourways: A1 range

Accreditation.

N/A

Environment.

Recycled material content: 34%

Recycleability of product: 97%

Stacking Chair

Without Arms.



CCS Reference. BOOKA-01-STKb

UNSPSC. 56101504

Task or loose. Loose

CCS product group level 2. Seating.

Supplier Code.

ADL12

Manufacturer.

Senator

Lead Time.

4-6 Weeks.

Specification.

- Mesh back
- 4 leg frame to be polished or the nearest metal finish available
- Castors to be applied on a ratio for stacking purposes on overall quantity
- Incorporate glides at chair base
- No visible logo or branding tags, buttons, or plates

Dimensions.

Seat Height: 450mm

Finishes.

Fabric Details: Manufacturer fabric bands 3

Colourways: A1 range

Accreditation.

N/A

Environment.

Recycled material content: 34%

Recycleability of product: 97%



Low Coffee Table.

CCS Reference. BOOKA-01-TCE

UNSPSC. 56101519

Task or loose. Loose

CCS product group level 2.
Desking.

Supplier Code.

BOWCC600C

Manufacturer.

SouthernsBroadstock LTD

Lead Time.

4-6 Weeks.

Specification.

- Project specific – legs to be timber/ metal powder-coated
- Project specific – diameter dimensions as specified
- Warranty of 8 years
- No visible logo or branding tags, buttons, or plates

Dimensions.

Height: 455mm
DIA 600/800/1000mm

Finishes.

Manufacturer standard finish MFC; Beech, Light Oak, Light Grey, German Beech, Portofino Cherry, White, Walnut, Maple and Verade Oak

Accreditation.

N/A

Environment.

Recycled material content: 43%
Recycleability of product: 98%



High Coffee Table.

CCS Reference. BOOKA-02-TCE

UNSPSC. 56101519

Task or loose. Loose

CCS product group level 2.
Desking.

Supplier Code.

BOWCC6900C

Manufacturer.

SouthernsBroadstock LTD

Lead Time.

4-6 Weeks.

Specification.

- Project specific – legs to be timber/ metal powder-coated
- Project specific – diameter dimensions as specified
- Warranty of 8 years
- No visible logo or branding tags, buttons, or plates

Dimensions.

Height: 730mm
DIA 600,800,1000mm

Finishes.

Manufacturer standard finishes MFC;
Beech, Light Oak, Light Grey, German
Beech, Portofino Cherry, White, Walnut,
Maple and Verade Oak

Accreditation.

N/A

Environment.

Recycled material content: 43%
Recycleability of product: 98%

Foldable Mobile Table.



CCS Reference. INTER-01-TFT ,
BOOKA-01-TFT and AMENI-01-TFT

UNSPSC. 56101706

Task or loose. Loose

CCS product group level 2.
Desking.

Supplier Code.

Timmy

Manufacturer.

Southernsbroadstock Ltd

Lead Time.

4-6 Weeks.

Specification.

- Table top leveler mechanism
- Table sizes to be confirmed with project specific requirements
- Protective edge-banding
- Power and data access – Project Specific
- Warranty of 8 years
- No visible logo or branding tags, buttons, or plates

Dimensions.

Meeting room foldable mobile table
Dimensions: Width: 1200-2000mm
Depth: 600-900mm
Height: 730mm (with 700mm clearance)

Finishes.

Top/material finish: White MFC or standard manufactured colours

Inset metal legs

Base/material finish: Lockable black castors.

Accreditation.

N/A

Environment.

Recycled material content: 37%
Recycleability of product: 99%

Foldable Mobile Table.

CCS Reference. INTER-01-TFT ,
BOOKA-01-TFT and AMENI-01-TFT

UNSPSC. 56101706

Task or loose. Loose

CCS product group level 2.
Desking.

Supplier Code.

Timmy

Manufacturer.

Southernsbroadstock Ltd

Lead Time.

4-6 Weeks.

Specification.

- Table top leveler mechanism
- Table sizes to be confirmed with project specific requirements
- Protective edge-banding
- Power and data access as per Table 1
- Warranty of 8 years
- No visible logo or branding tags, buttons, or plates

Dimensions.

Meeting room foldable mobile table
Dimensions: Width: 1200-2000mm
Depth: 600-900mm
Height: 730mm (with 700mm clearance)

Finishes.

Top/material finish: White MFC or standard manufactured colours

Inset metal legs

Base/material finish: Lockable black castors.

Accreditation.

N/A

Environment.

Recycled material content: 37%
Recycleability of product: 99%



Power Module (Project Specific)

Work Table.



Power Module (Project Specific)

CCS Reference. BOOKA-01-TIM

UNSPSC. 5610706

Task or loose. Loose

CCS product group level 2.
Desking.

Supplier Code.

BOWM1811R

Manufacturer.

Southernsbroadstock Ltd

Lead Time.

4-6 Weeks.

Specification.

- Interview rooms rectangular meeting table
- Project specific requirements for table-top power.
- Base to be capable of being securely fixed to the floor
- Minimum warranty of 8 years
- No visible logo or branding tags, buttons, or plates to be used in products

Dimensions.

Width: 1800-4400mm
Depth: 1000-2000mm
Height: 735mm (with 700mm clearance)

Finishes.

Top Material/ Finish: White MFC or standard manufacturer colours
Base Material/ Finish: Metal pedestal base

Edge Detail: Protective edge-banding

Accreditation.

N/A

Environment.

Recycled material content: 43%
Recycleability of product: 98%

Rectangular / Square Work Table.



CCS Reference. BOOKA-02-TWD

UNSPSC. 5610706

Task or loose. Loose

CCS product group level 2.
Desking.

Supplier Code.

E2A

Manufacturer.

Southernsbroadstock Ltd

Lead Time.

4-6 Weeks.

Specification.

- Power and AV access (grommet or cubby) to be determined by Table 1: 'Power Requirements' and Table 2: 'AV Requirements' or project specific requirements
- Concealed horizontal and vertical cable management
- Minimum warranty of 8 years
- No visible logo or branding tags, buttons, or plates to be used in products

Dimensions.

Width: 1400, 2800, 4200mm
Depth:1600mm
Height: 730-740mm (with 700mm clearance)

Finishes.

Top Material/ Finish: Manufacturer standard colours MFC/HPL or timber veneer

Base Material/ Finish: Legs – timber/ powder-coated matt standard finish

Accreditation.

N/A

Environment.

Recycled material content: 43%
Recycleability of product: 98%



Power Module (Project Specific)

Low Storage Unit For Equipment.

CCS Reference. INTER-01-RMC,
BOOKA-02-RMC, AMENI-01-RMC

UNSPSC. 56101530

Task or loose. Loose

CCS product group level 2.
Storage.

Supplier Code.

MACR25

Manufacturer.

SouthernsBroadstock LTD

Lead Time.

4-6 Weeks.

Specification.

- Internal components within the storage units to include (but not limited to) plain shelves
- Optional locking capability
- With/without castors option
- Project specific AV requirements to be incorporated
- Warranty of 8 years
- No visible logo or branding tags, buttons, or plates

Dimensions.

Width: 800mm
Depth: 450 and 600mm
Height: 800mm (or project specific)

Finishes.

Material/finish: Top to incorporate water/ scratch resistant finish

MFC/HPL manufacturer standard finish

Accreditation.

N/A

Environment.

Recycled material content: 42%
Recycleability of product: 97%





Built In Upholstered Banquette Seating.

| | | |
|--|--|--|
| CCS Reference. INTER-01-SBQ | Specification. | Dimensions. |
| UNSPSC. 56101504 | <ul style="list-style-type: none">With/without power option - necessary power and data to be provided per project specific requirementsOptional integral arms incorporated into back of seatEasily accessible storage element for equipment to be incorporated in banquetteWarranty of 8 yearsNo visible logo or branding tags, buttons, or platesBack Construction: Polyfoam over hardboard backingSeat Construction: Removable with polyfoam bonded Dacron insulpad and coil springs | Seat Height: 450 x W1500 x D650 x 1100mm |
| Task or loose. Loose | | Finishes. |
| CCS product group level 2. Seating. | | Base/Leg Type: Recessed Fabric Details: Manufacturer fabric bands 3 & 4 |
| Supplier Code. | | Accreditation. |
| XS-IDY-CCS16 | | N/A |
| Manufacturer. | | Environment. |
| Southernsbroadstock LTD | | Recycled material content: N/A% Recycleability of product: N/A% |
| Lead Time. | | |
| 4-6 Weeks. | | |



PLEASE NOTE: IMAGE SHOWS UNIT WITHOUT ARMS

Built In Upholstered Banquette

Seating With Integral Arms.

| | | |
|--|---|---|
| CCS Reference. INTER-01-SBQa | Specification. | Dimensions. |
| UNSPSC. 56101504 | <ul style="list-style-type: none">· Back Construction: Polyfoam over hardboard backing· Seat Construction: Removable with polyfoam bonded Dacron insulpad and coil springs· Base or Leg Style: Recessed· With/without power option - necessary power to be provided as per project specific requirements· Minimum warranty of 8 years· No visible logo or branding tags, buttons, or plates to be used in products | Seat Height: 450-480mm Optional base plinth Height: Not to exceed 150mm Width: 1600mm or 2400mm Depth: 650-700mm Height: 900-1100mm |
| Task or loose. Loose | | Finishes. |
| CCS product group level 2. Seating. | | Base/Leg Type: Recessed Fabric Details: Manufacturer fabric bands 3 & 4 |
| Supplier Code. | | Accreditation. |
| XS-IDY-CCS16 | | N/A |
| Manufacturer. | | Environment. |
| Southernsbroadstock LTD | | Recycled material content: N/A% Recycleability of product: N/A% |
| Lead Time. | | |
| 4-6 Weeks. | | |

Side Chair.



CCS Reference. INTER-01-SSC

UNSPSC. 48102001

Task or loose. Loose

CCS product group level 2.
Seating.

Supplier Code.

BOWLWD

Manufacturer.

Southernsbroadstock LTD

Lead Time.

4-6 Weeks.

Specification.

- Design to be project specific and to add regional accent
- Seating heights to be appropriate for the selected activity function
- Fully upholstered seat and back with timber legs
- Warranty of 8 years
- No visible logo or branding tags, buttons, or plates

Dimensions.

Seat Height: 450mm

Finishes.

Fabric Details: Upholstered

Manufacturer bands 3, 2, 1

Colourways: C1 range

Accreditation.

N/A

Environment.

Recycled material content: 43%

Recycleability of product: 98%

Soft Seating System.

CCS Reference. INTER-01-SSO

UNSPSC. 56101504

Task or loose. Loose

CCS product group level 2.
Seating.

Supplier Code.

S1/2/4/7/8
Codes relate to image shown only.

Manufacturer.

Southernsbroadstock LTD

Lead Time.

4-6 Weeks.

Specification.

- Design to be project specific and to add regional accent
- Back support will be provided at a height of at least 300mm from seat level for part of soft seating over 1200mm
- Seat foam to be converted polyurethane or manufactured nearest equivalent
- Warranty of 8 years
- No visible logo or branding tags, buttons, or plates

Dimensions.

Seat Height: 450mm
Length: 1200mm/2400mm/3000mm

Finishes.

Fabric Details: Manufacturer fabric bands 3

Colourways: B1 or C1

Accreditation.

N/A

Environment.

Recycled material content: 15%
Recycleability of product: 98%





Soft Seating System (Integral Arms).

CCS Reference. INTER-01-SSOa

UNSPSC. 56101504

Task or loose. Loose

CCS product group level 2.
Seating.

Supplier Code.

S1/2/4/7/8
Codes relate to image shown only.

Manufacturer.

Southernsbroadstock LTD

Lead Time.

4-6 Weeks.

Specification.

- Upholstered soft seating grouping with integral arms
- Design to be project specific and to add regional accent
- Integral arms at a height of 200mm from the surface of the seat and will extend from the back support forwards to cover at least 80% of the depth of the seat
- Arm rests will contrast visually with the remainder of the seat to ensure that they are easily identifiable
- Back support will be provided at a height of at least 300mm from seat level for part of soft seating over 1200mm
- Seat foam to be converted polyurethane or manufactured nearest equivalent
- Warranty of 8 years
- No visible logo or branding tags, buttons, or plates

Dimensions.

Seat Height: 450mm
Length: 1200mm/2400mm/3000mm

Finishes.

Fabric Details: Manufacturer fabric bands 3

Colourways: B1 or C1

Accreditation.

N/A

Environment.

Recycled material content: 15%
Recycleability of product: 98%

Side Table.



CCS Reference. INTER-01-TCE,
DONOT-01-TCE

UNSPSC. 56101719

Task or loose. Loose

CCS product group level 2.
Desking.

Supplier Code.

LPTE2WH

Manufacturer.

Southernsbroadstock LTD

Lead Time.

4-6 Weeks.

Specification.

- Off-centred top from base to allow laptop use with soft seating
- Warranty of 8 years
- No visible logo or branding tags, buttons, or plates

Dimensions.

Width: 500mm
Depth: 400mm

Finishes.

Top Material Finish: Standard MFC

Base material/finish: Metal/powder coated

Accreditation.

N/A

Environment.

Recycled material content: 41%
Recycleability of product: 85%



Height Adjustable Side Table.

| | | |
|--|--|---|
| CCS Reference. INTER-03-TCE | Specification. | Dimensions. |
| UNSPSC. 56101719 | <ul style="list-style-type: none">· Off-centred top from base to allow laptop use with soft seating· Warranty of 8 years· No visible logo or branding tags, buttons, or plates | Width: 500mm Depth: 400mm |
| Task or loose. Loose | | Finishes. |
| CCS product group level 2. Desking. | | Top material finish: White MFC base material finish: Metal/powder coated |
| Supplier Code. | | Accreditation. |
| LPT1WH | | N/A |
| Manufacturer. | | Environment. |
| Southernsbroadstock LTD | | Recycled material content: 41% Recycleability of product: 85% |
| Lead Time. | | |
| 4-6 Weeks. | | |

Meeting Table.



CCS Reference. INTER-01-TIM

UNSPSC. 56101706

Task or loose. Loose

CCS product group level 2.
Desking.

Specification.

- Foldable option to be applied if segmented table tops
- Power and data access, project specific – refer to Table 1: Power Requirements
- Warranty of 8 years
- No visible logo or branding tags, buttons, or plates

Dimensions.

Width: 3000mm
Depth: 1200mm
Height: 740mm

Finishes.

Top/material finish: Manufacturer standard colours MFC or Timber

Legs – metal powder-coated matt standard finish/timber

Supplier Code.

Metal Legs / BOWMT3012R
Wooden Legs / BOWM3012R

Manufacturer.

Southernsbroadstock LTD

Lead Time.

4-6 Weeks.

Accreditation.

N/A

Environment.

Recycled material content: 31%
Recycleability of product: 92%

Meeting Booth.

CCS Reference. INTER-01-TWD

UNSPSC. 5610900

Task or loose. Loose

CCS product group level 2.
Seating.

Supplier Code.

XS-IDY CCS19

Manufacturer.

Southernsbroadstock LTD

Lead Time.

4-6 Weeks.

Specification.

- Size and configuration to be coordinated per project specific requirements
- Sprung seat or equivalent quality
- Power and data access - refer to Table 1: Power Requirements
- Gap width between table and seat edge is to be fully accessible to users – minimum 300mm.
- Warranty of 8 years
- No visible logo or branding tags, buttons, or plates
- With/Without media bracket

Dimensions.

Seat height: 470mm
Seat width: 700mm
Overall height: 1400mm
Overall width: 900mm
Table height: 730mm (with 705mm clearance)

Finishes.

Top material/finish: Manufacturer standard colours MFC

base material finish: Metal/timber legs

Fabric details: Manufacturer fabric bands 3

Fully upholstered

Accreditation.

N/A

Environment.

Recycled material content: 17%
Recycleability of product: 97%



Coat Hook : positioned on the inside of the arm

2 Person Meeting Booth/Pod.



CCS Reference. INTER-02-TWD

UNSPSC. 5610900

Task or loose. Loose

CCS product group level 2. Seating.

Supplier Code.

XS-IDY CCS21

Manufacturer.

Southernsbroadstock LTD

Lead Time.

4-6 Weeks.

Specification.

- Open meeting area upholstered booth with integrated table and integral coat hooks (2 Person)
- Size and configuration to be coordinated per project specific requirements
- Sprung seat or equivalent quality
- Power and data access - refer to Table 1: Power Requirements
- Gap width between table and seat edge is to be fully accessible to users – minimum 300mm.
- Warranty of 8 years
- No visible logo or branding tags, buttons, or plates
- with/without media bracket

Dimensions.

Seat height: 470mm
Seat width: 700mm
Overall height: 1400mm
Overall width: 900mm
Table height: 730mm (with 700mm clearance)

Finishes.

Top material/finish: Manufacturer standard colours MFC or timber
Base material/finish: Metal/timber legs
Fabric details: Manufacturer fabric bands 3
Fully upholstered

Accreditation.

N/A

Environment.

Recycled material content: 17%
Recycleability of product: 97%



Coat Hook : positioned on the inside of the arm

Cantilever Meeting Chair.



CCS Reference.

INTER-02-SMC (without arms) /
INTER-03-SMC

UNSPSC. 56101504

Task or loose. Loose

CCS product group level 2.
Seating.

Supplier Code.

A10

Manufacturer.

Southernsbroadstock LTD

Lead Time.

4-6 Weeks.

Specification.

- Fully upholstered seat pad (CMHR foam)
- Chairs to be stackable
- Design to be project specific and to add regional accent
- Seating heights to be appropriate for the selected activity function
- Warranty of 8 years
- No visible logo or branding tags, buttons, or plates

Dimensions.

Seat Height: Range 450mm

Finishes.

Fabric Details:Manufacturer fabric bands 1+, 2 & 3

Colourways: C1 fabric range

Accreditation.

N/A

Environment.

Recycled material content: 34%
Recycleability of product: 97%



Low Coffee Table.

CCS Reference. INTER-02-TCE

UNSPSC. 5610519

Task or loose. Loose

CCS product group level 2.
Desking.

Specification.

- Diameter dimensions as specified
- Warranty of 8 years
- No visible logo or branding tags, buttons, or plates

Dimensions.

Height: 500mm maximum
Diameter: 600mm

Finishes.

Top material/finish:Manufacturer standard finishes MFC; Beech, Light Oak, Light Grey, German Beech, Portofino Cherry, White, Walnut, Maple and Verade Oak.

Legs - timber/metal powder-coated

Supplier Code.

BOWCC600C

Manufacturer.

Southernsbroadstock LTD

Lead Time.

4-6 Weeks.

Accreditation.

N/A

Environment.

Recycled material content: 43%
Recycleability of product: 98%

High Coffee Table.



CCS Reference. INTER-04-TCE

UNSPSC. 5610519

Task or loose. Loose

CCS product group level 2.
Desking.

Specification.

- Diameter dimensions as specified
- Warranty of 8 years
- No visible logo or branding tags, buttons, or plates

Dimensions.

Height: 730 mm maximum
Diameter: 600mm

Finishes.

Top material/finish: Manufacturer standard finishes MFC/HPL; Beech, Light Oak, Light Grey, German Beech, Portofino Cherry, White, Walnut, Maple and Verade Oak.

Base Material finish: Legs - timber/metal powder-coated

Accreditation.

N/A

Environment.

Recycled material content: 43%
Recycleability of product: 98%

Supplier Code.

BOWCC6900C

Manufacturer.

Southernsbroadstock LTD

Lead Time.

4-6 Weeks.



Media Unit.

CCS Reference. INTER-02-TIM

UNSPSC. 5610900

Task or loose. Loose

CCS product group level 2.
Media Unit.

Supplier Code.

Media Unit

Manufacturer.

Southernsbroadstock LTD

Lead Time.

4-6 Weeks.

Specification.

- Power and data access, project specific - refer to Table 1: Power Requirements and Table 2: AV Requirements
- Power to be integrated either grommet or built in power
- Overall size and configuration to be determined by project specific requirements
- Height adjustable table option dependent on dimensions
- Bracket for monitor to be supplied
- Warranty of 8 years
- No visible logo or branding tags, buttons, or plates
- Screen available with or without castors

Dimensions.

Table Height: 730mm (with 700mm minimum clearance)
Overall Panel Height: 1800mm

Accreditation.

N/A

Environment.

Recycled material content: 33%
Recycleability of product: 90%



Media Unit

With Soft Seating.

CCS Reference. INTER-02-TIMa

UNSPSC. 5610900

Task or loose. Loose

CCS product group level 2. Seating.

Supplier Code.

Media Unit

Manufacturer.

Southernsbroadstock LTD

Lead Time.

4-6 Weeks.

Specification.

- Power and data access, project specific - refer to Table 1: Power Requirements and Table 2: AV Requirements
- Overall size and configuration to be determined by project specific requirements
- Height adjustable table option dependent on dimensions
- Bracket for monitor to be supplied
- Warranty of 8 years
- No visible logo or branding tags, buttons, or plates
- Screen available with or without castors

Dimensions.

Table Height: 730mm (with 700mm minimum clearance)
Overall Panel Height: 1800mm
Soft Seating Height: 440mm

Accreditation.

N/A

Environment.

Recycled material content: N/A%
Recycleability of product: N/A%



Touchdown High Counter.



CCS Reference. INFOR-01-TIM,
INTER-01-TIM

UNSPSC. 56101703

Task or loose. Task

CCS product group level 2.
Desking.

Supplier Code.

BFR REF 2704

Manufacturer.

Southernsbroadstock LTD

Lead Time.

4-6 Weeks.

Specification.

- Integral counter top presented power to be provided - refer to Table 1: Power Requirements
- Warranty of 8 years
- No visible logo or branding tags, buttons, or plates

Dimensions.

Width: 2200mm
Depth: 600-800mm
Height: 850-1010mm

Finishes.

Top material/finish: Standard MFC matt/
HPL

Accreditation.

N/A

Environment.

Recycled material content: N/A%
Recycleability of product: N/A%

Personal Locker Units

Double.



CCS Reference. AMENI-01-RLK

UNSPSC. 56101520

Task or loose. Task

CCS product group level 2.
Storage.

Supplier Code.

LU12OW47-PBDL / LU16OW47-PBDL

Manufacturer.

Silverline

Lead Time.

4-6 Weeks.

Specification.

- Lockers to be located in built-in niches where possible
- 3 locker high and 4 locker high double locker (3H 6L and 4H 8L)
- Individual lockers to have drawers at lowest level
- All lockers to be supplied with height adjustable single shelf
- All locker carcasses to be finished in manufacturer standard finish powder coated steel or high pressure laminate - unless project specific use Traffic White RAL 9016
- Individual compartments to be lockable, vertical 10 digit digital system with 4 digit code and factory setting code to be unique to Contracting Authority
- Lock to be supplied with master key code or equivalent
- Contrasting lock colour to door to be supplied
- Doors and drawers to receive recessed handles and to be a mix of A1 and C1 colour range for a visual break-up
- Doors and drawers to be supplied with colour contrast apertures and sequential card numbered inlays
- Verify project specific requirements for final locker sizes and configuration
- Doors to be capable of receiving applied graphic labeling

- Able to accommodate locker caddy – See SUNL20
- Minimum warranty of 8 years
- No visible logo or branding tags, buttons, or plates to be used in products
- Post Box handles on bottom drawer to be horizontal and not vertical.

Dimensions.

Carcass Height: 1800mm
Locker Width: 400mm
Locker Depth: 500mm
Locker Height: 400mm

Accreditation.

N/A

Environment.

Recycled material content: 30%
Recycleability of product: 97%

Personal Locker Units

Double With Sloping Tops.



CCS Reference. AMENI-01-RLKa

UNSPSC. 56101520

Task or loose. Task

CCS product group level 2.
Storage.

Supplier Code.

LU12OW47-PBDL-ST / LU16OW47-PBDL-ST

Manufacturer.

Silverline

Lead Time.

4-6 Weeks.

Specification.

- Lockers to be located in built-in niches where possible
- 3 locker high and 4 locker high (double lockers)
- Individual lockers to have drawers at lowest level
- All lockers to be supplied with height adjustable single shelf
- All locker carcasses to be finished in manufacturer standard finish powder coated steel or high pressure laminate - unless project specific use Traffic White RAL 9016
- Individual compartments to be lockable, vertical 10 digit digital system with 4 digit code and factory setting code to be unique to HMRC
- Lock to be supplied with master key code or equivalent
- Contrasting lock colour to door to be supplied
- Doors and drawers to receive recessed handles and to be a mix of A1 and C1 colour range for a visual break-up
- Doors and drawers to be supplied with colour contrast apertures and sequential card numbered inlays
- Verify project specific requirements for final locker sizes and configuration
- Doors to be capable of receiving applied graphic labelling
- Able to accommodate locker caddy

– See SUNL20

- Minimum warranty of 8 years
- No visible logo or branding tags, buttons, or plates to be used in products
- Post Box handles on bottom drawer to be horizontal and not vertical.

Dimensions.

Carcass Height: 1800mm
Locker Width: 400mm
Locker Depth: 500mm
Locker Height: 400mm

Accreditation.

N/A

Environment.

Recycled material content: 30%
Recycleability of product: 97%

Personal Locker Units

Single.



CCS Reference. AMENI-01-RLKb

UNSPSC. 56101520

Task or loose. Task

CCS product group level 2.
Storage.

Supplier Code.

LUSCL126RW47-PBDL /
LUSCL16RW47-PBDL

Manufacturer.

Silverline

Lead Time.

4-6 Weeks.

Specification.

- Lockers to be located in built-in niches where possible
- 3 locker high and 4 locker high single locker (3H 3L and 4H 4L)
- Individual lockers to have drawers at lowest level
- All lockers to be supplied with height adjustable single shelf
- All locker carcasses to be finished in manufacturer standard finish powder coated steel or high pressure laminate - unless project specific use Traffic White RAL 9016
- Individual compartments to be lockable, vertical 10 digit digital system with 4 digit code and factory setting code to be unique to Contracting Authority
- Lock to be supplied with master key code or equivalent
- Contrasting lock colour to door to be supplied
- Doors and drawers to receive recessed handles and to be a mix of A1 and C1 colour range for a visual break-up
- Doors and drawers to be supplied with colour contrast apertures and sequential card numbered inlays
- Verify project specific requirements for final locker sizes and configuration
- Doors to be capable of receiving applied graphic labeling

- Able to accommodate locker caddy – See SUNL20
- Minimum warranty of 8 years
- No visible logo or branding tags, buttons, or plates to be used in products
- Post Box handles on bottom drawer to be horizontal and not vertical.

Dimensions.

Carcass Height: 1800mm
Locker Width: 400mm
Locker Depth: 500mm
Locker Height: 400mm

Accreditation.

N/A

Environment.

Recycled material content: 30%
Recycleability of product: 97%



Personal Locker Units

Single With Sloping Tops.

CCS Reference. AMENI-01-RLKc

UNSPSC. 56101520

Task or loose. Task

CCS product group level 2.
Storage.

Supplier Code.

LUSCL126RW47-PBDL /
LUSCL16RW47-PBDL

Manufacturer.

Silverline

Lead Time.

4-6 Weeks.

Specification.

- Lockers to be located in built-in niches where possible
- 3 locker high and 4 locker high (single lockers)
- Individual lockers to have drawers at lowest level
- All lockers to be supplied with height adjustable single shelf
- All locker carcasses to be finished in manufacturer standard finish powder coated steel or high pressure laminate - unless project specific use Traffic White RAL 9016
- Individual compartments to be lockable, vertical 10 digit digital system with 4 digit code and factory setting code to be unique to HMRC
- Lock to be supplied with master key code or equivalent
- Contrasting lock colour to door to be supplied
- Doors and drawers to receive recessed handles and to be a mix of A1 and C1 colour range for a visual break-up
- Doors and drawers to be supplied with colour contrast apertures and sequential card numbered inlays
- Verify project specific requirements for final locker sizes and configuration
- Doors to be capable of receiving applied graphic labeling
- Able to accommodate locker caddy

– See SUNL20

- Minimum warranty of 8 years
- No visible logo or branding tags, buttons, or plates to be used in products
- Post Box handles on bottom drawer to be horizontal and not vertical.

Dimensions.

Carcass Height: 1800mm
Locker Width: 400mm
Locker Depth: 500mm
Locker Height: 400mm

Accreditation.

N/A

Environment.

Recycled material content: 30%
Recycleability of product: 97%

Receptionist's / Security Locker.



CCS Reference. AMENI-02-RLK

UNSPSC. 56101520

Task or loose. Loose

CCS product group level 2.
Storage.

Supplier Code.

LU12OW47-PBDL / LU16OW47-PBDL

Manufacturer.

Silverline

Lead Time.

4-6 Weeks.

Specification.

- Lockers to be located in built-in niches where possible
- 3 locker high and 4 locker high double locker (3H 6L and 4H 8L)
- Individual lockers to have drawers at lowest level
- All lockers to be supplied with height adjustable single shelf
- All locker carcasses to be finished in manufacturer standard finish powder coated steel or high pressure laminate - unless project specific use Traffic White RAL 9016
- Individual compartments to be lockable, vertical 10 digit digital system with 4 digit code and factory setting code to be unique to Contracting Authority
- Lock to be supplied with master key code or equivalent
- Contrasting lock colour to door to be supplied
- Doors and drawers to receive recessed handles and to be a mix of A1 and C1 colour range for a visual break-up
- Doors and drawers to be supplied with colour contrast apertures and sequential card numbered inlays
- Verify project specific requirements for final locker sizes and configuration
- Doors to be capable of receiving applied graphic labeling

- Able to accommodate locker caddy – See SUNL20
- Minimum warranty of 8 years
- No visible logo or branding tags, buttons, or plates to be used in products
- Post Box handles on bottom drawer to be horizontal and not vertical.

Dimensions.

Carcass Height: 1800mm
Locker Width: 400mm
Locker Depth: 500mm
Locker Height: 400mm

Accreditation.

N/A

Environment.

Recycled material content: 30%
Recycleability of product: 97%

Accessible Locker.



CCS Reference. AMENI-03-RLK

UNSPSC. 56101520

Task or loose. Loose

CCS product group level 2.
Storage.

Supplier Code.

LU12OW47-PBDL / LU16OW47-PBDL

Manufacturer.

Silverline

Lead Time.

4-6 Weeks.

Specification.

- PROJECT SPECIFIC – dependent on location
- Accessible lockers will be provided in and around changing, shower and cycle storage areas
- Locks will be between 750 mm and 100 mm above floor level and will be easy to use, one handed, by a person with poor dexterity or limited strength in the hand or arm
- Some lockers will be at least 1.2 m high.
- Minimum warranty of 8 years
- No visible logo or branding tags,

Dimensions.

Width: 300mm minimum
Depth: 600mm maximum
Base Set: 400-800mm above finished floor level

Accreditation.

N/A

Environment.

Recycled material content: 30%
Recycleability of product: 97%

Banquette Seating

With Fixed Integral Arms.



PLEASE NOTE: IMAGE SHOWS UNIT WITHOUT ARMS

| | | |
|--|--|---|
| CCS Reference. AMENI-01-SBQ | Specification. | Dimensions. |
| UNSPSC. 56101504 | <ul style="list-style-type: none">Fully upholstered banquette seating with fixed armsWith/without power option - necessary power and data to be provided per project specific requirementsArms at a height of 200mm from the surface of the seat and will extend from the back support forwards to cover at least 80% of the depth of the seatArm rests will contrast visually with the remainder of the seat to ensure that they are easily identifiableBack support will be provided at a height of at least 300mm from seat level for part of soft seating over 1200mmOptional integral folding arms incorporated into back of seatEasily accessible storage element for equipment to be incorporated in banquetteWarranty of 8 yearsNo visible logo or branding tags, buttons, or plates | Seat Height: 450-480mm Back support minimum 300mm Length: (up to) 2400mm |
| Task or loose. Loose | | Finishes. |
| CCS product group level 2. Seating. | | Back Construction: Polyfoam over hardboard backing Seat Construction: Removable with polyfoam bonded Dacron insulpad and coil springs Base or leg style: Recessed Base height: 150mm |
| Supplier Code. | | Accreditation. |
| XS-IDY-CCS23 | | N/A |
| Manufacturer. | | Environment. |
| SouthernsBroadstock LTD | | Recycled material content: N/A% Recycleability of product: N/A% |
| Lead Time. | | |
| 4-6 Weeks. | | |

Banquette Seating.



CCS Reference. AMENI-01-SBQa

UNSPSC. 56101504

Task or loose. Loose

CCS product group level 2.
Seating.

Supplier Code.

XS-IDY-CCS23

Manufacturer.

Southernsbroadstock LTD

Lead Time.

4-6 Weeks.

Specification.

- Fully upholstered banquette seating
- With/without power option - necessary power and data to be provided per project specific requirements
- Arms at a height of 200mm from the surface of the seat and will extend from the back support forwards to cover at least 80% of the depth of the seat
- Arm rests will contrast visually with the remainder of the seat to ensure that they are easily identifiable
- Back support will be provided at a height of at least 300mm from seat level for part of soft seating over 1200mm
- Optional integral folding arms incorporated into back of seat
- Easily accessible storage element for equipment to be incorporated in banquette
- Warranty of 8 years
- No visible logo or branding tags, buttons, or plates

Dimensions.

Seat Height: 450-480mm
Back support minimum 300mm
Length: (up to) 2400mm

Finishes.

Back Construction: Polyfoam over hardboard backing

Seat Construction: Removable with polyfoam bonded Dacron insulpad and coil springs

Base or leg style: Recessed

Base height: 150mm

Accreditation.

N/A

Environment.

Recycled material content: N/A%
Recycleability of product: N/A%

Fully Upholstered Lounge Chair.



CCS Reference. AMENI-01-SLC

UNSPSC. 56101522

Task or loose. Loose

CCS product group level 2. Seating.

Supplier Code.

MT612T

Manufacturer.

SouthernsBroadstock LTD

Lead Time.

4-6 Weeks.

Specification.

- Fully upholstered CMHR molded foam
- Design to be project specific and to add regional accent
- Seating heights to be appropriate for the selected activity function
- Warranty of 8 years
- No visible logo or branding tags, buttons, or plates

Dimensions.

Fully upholstered high back lounge chair
Dimensions: Depth: 800mm
Height: 1000mm
Seat Height: 500mm

Finishes.

Material/finish: Upholstery
Manufacturer fabric bands 4, 3, 2
Colourways: C1 range

Accreditation.

N/A

Environment.

Recycled material content: 34%
Recycleability of product: 97%

Frame Styles





Guest Chair.

| | | |
|--|--|---------------------------------|
| CCS Reference. AMENI-01-SMC | Specification. | Dimensions. |
| UNSPSC. 5610504 | <ul style="list-style-type: none">· Height adjustable seat· Seat tilt tension and tilt limiter- all adjustment mechanisms to be accessible from the side of the chair only· Upholstered seat· Seat shell in black/white/metal· 5 star castor base· Warranty of 8 years· No visible logo or branding tags, buttons, or plates | Seat Height: 470mm |
| Task or loose. Loose | | Finishes. |
| CCS product group level 2. Seating. | | Colourways: A1 range |
| | | Accreditation. |
| Supplier Code. | | N/A |
| XIP10ASWUP/XIP11SWUP | | Environment. |
| Manufacturer. | | Recycled material content: N/A% |
| Southernsbroadstock LTD | | Recycleability of product: N/A% |
| Lead Time. | | |
| 4-6 Weeks. | | |



Daybed.

CCS Reference. AMENI-01-SSO

UNSPSC. 56101900

Task or loose. Loose

CCS product group level 2.
Accessories.

Supplier Code.

S3/HEADREST

Manufacturer.

Southernsbroadstock LTD

Lead Time.

4-6 Weeks.

Specification.

- Design to be project specific and to add regional accent
- Seat foam converted polyurethane
- Warranty of 8 years
- No visible logo or branding tags, buttons, or plates

Dimensions.

Seat Height: 480mm

Finishes.

Fabric details: Manufacturer fabric band 3

Colourways: A1 range

Accreditation.

N/A

Environment.

Recycled material content: 20%

Recycleability of product: 98%



Café / Bisto Chair.

CCS Reference. AMENI-01-STK

UNSPSC. 48102001

Task or loose. Loose

CCS product group level 2.
Seating.

Supplier Code.

XIP2

Manufacturer.

Southernsbroadstock LTD

Lead Time.

4-6 Weeks.

Specification.

- Steel rod frame to be polished or the nearest metal finish available
- Stackable, with capacity of 30 chairs on trolley
- Design to accommodate storage point for chair trolley
- Glides at chair base
- Warranty of 8 years
- No visible logo or branding tags, buttons, or plates

Dimensions.

Seat Height: 450mm

Finishes.

Seat: Plastic

Base: Metal legs

Accreditation.

N/A

Environment.

Recycled material content: N/A%

Recycleability of product: 79%

Colour options



Café Chair.



CCS Reference. AMENI-01-STKa
UNSPSC. 48102001
Task or loose. Loose
CCS product group level 2. Seating.

Supplier Code.
360060

Manufacturer.
Southernsbroadstock LTD

Lead Time.
4-6 Weeks.

- Specification.**
- Timber shell
 - Design to accommodate storage point for chair trolley
 - Incorporate glides at chair base
 - Warranty of 8 years
 - No visible logo or branding tags, buttons, or plates
 - Stack up to 20 chairs to refer to chair trolley code SUNL-16

Dimensions.
Seat Height: 450mm
Finishes.
Seat: Plastic in grey or black
Base: Timber legs

Accreditation.
N/A

Environment.
Recycled material content: N/A%
Recycleability of product: 89%



Café Dining Table.

CCS Reference. AMENI-01-TCA

UNSPSC. 5610519

Task or loose. Loose

CCS product group level 2.
Desking.

Specification.

- Protective edge-banding
- Warranty of 8 years
- No visible logo or branding tags, buttons, or plates

Dimensions.

Diameter: 1200mm
Table top Depth: 25mm
Height: 730mm (with 700mm clearance)

Finishes.

Top material/finish: White MFC or manufacturer standard finish; Beech, Light Oak, Light Grey, German Beech, Portofino Cherry, White, Walnut, Maple and Verade Oak

Base material/finish: Powder-coated/
Metallic 4 star base with silicon glides

Accreditation.

N/A

Environment.

Recycled material content: 43%
Recycleability of product: 98%

Supplier Code.

BOWCD1200C

Manufacturer.

Southernsbroadstock LTD

Lead Time.

4-6 Weeks.

Long Dining Bench.



CCS Reference. AMENI-01-TIM

UNSPSC. 56101543

Task or loose. Loose

CCS product group level 2.
Desking.

Supplier Code.

CARSTBS-6 Bench

Manufacturer.

Southernsbroadstock LTD

Lead Time.

4-6 Weeks.

Specification.

- Large steel frame bench seat, protective finish on timber, for ease of care and wipe ability
- Warranty of 8 years
- No visible logo or branding tags, buttons, or plates

Dimensions.

Seat Height: 400mm

Finishes.

Top material/finish: Timber

Base material/finish: Metal

Accreditation.

N/A

Environment.

Recycled material content: N/A%

Recycleability of product: 89%



Upholstered Soft Seating.

CCS Reference. AMENI-02-SSO

UNSPSC. 56101504

Task or loose. Loose

CCS product group level 2.
Seating.

Supplier Code.

S1/2/4/7/8

Manufacturer.

Southernsbroadstock LTD

Lead Time.

4-6 Weeks.

Specification.

- Design to be project specific and to add regional accent
- Seating heights to be appropriate for the selected activity function
- Seat foam to be converted polyurethane or manufactured nearest equivalent
- Warranty of 8 years
- No visible logo or branding tags, buttons, or plates

Dimensions.

Seat Height: 450mm

Finishes.

Fabric Details: Manufacturer fabric bands 2 or 3

Colourways: A1 colour options

Accreditation.

N/A

Environment.

Recycled material content: 15%
Recycleability of product: 98%



Square Cafe Bistro Table.

CCS Reference. AMENI-02-TCA

UNSPSC. 56101543

Task or loose. Loose

CCS product group level 2.
Desking.

Supplier Code.

AMAD700SQ

Manufacturer.

Southernsbroadstock LTD

Lead Time.

4-6 Weeks.

Specification.

- Protective edge-banding
- Warranty of 8 years
- No visible logo or branding tags, buttons, or plates

Dimensions.

Table top thickness: 25mm
Width: 600-800mm
Depth: 600-800mm
Height: 730 - 750mm (with 700mm clearance)

Finishes.

Top material/finish: White MFC or manufacturer standard finish;Beech, Light Oak, Light Grey, German Beech, Portofino Cherry, White, Walnut, Maple and Verade Oak

Base material/finish: Powder coated/ metallic 4 star base

4 legs powder coated

Edge detail: Knife edge

Accreditation.

N/A

Environment.

Recycled material content: N/A%
Recycleability of product: 34%



Circular Cafe Bistro Table.

CCS Reference. AMENI-02-TCAa

UNSPSC. 56101543

Task or loose. Loose

CCS product group level 2.
Desking.

Specification.

- Protective edge-banding
- Warranty of 8 years
- No visible logo or branding tags, buttons, or plates

Dimensions.

Table top thickness: 25mm
Height: 730mm (with 700mm clearance)
Circular Diameter: 600-800mm

Finishes.

Top material/finish: White MFC or manufacturer standard finish; Beech, Light Oak, Light Grey, German Beech, Portofino Cherry, White, Walnut, Maple and Verade Oak

Base material/finish: Powder coated/ metallic 4 star base

4 legs powder coated

Edge detail:knife edge

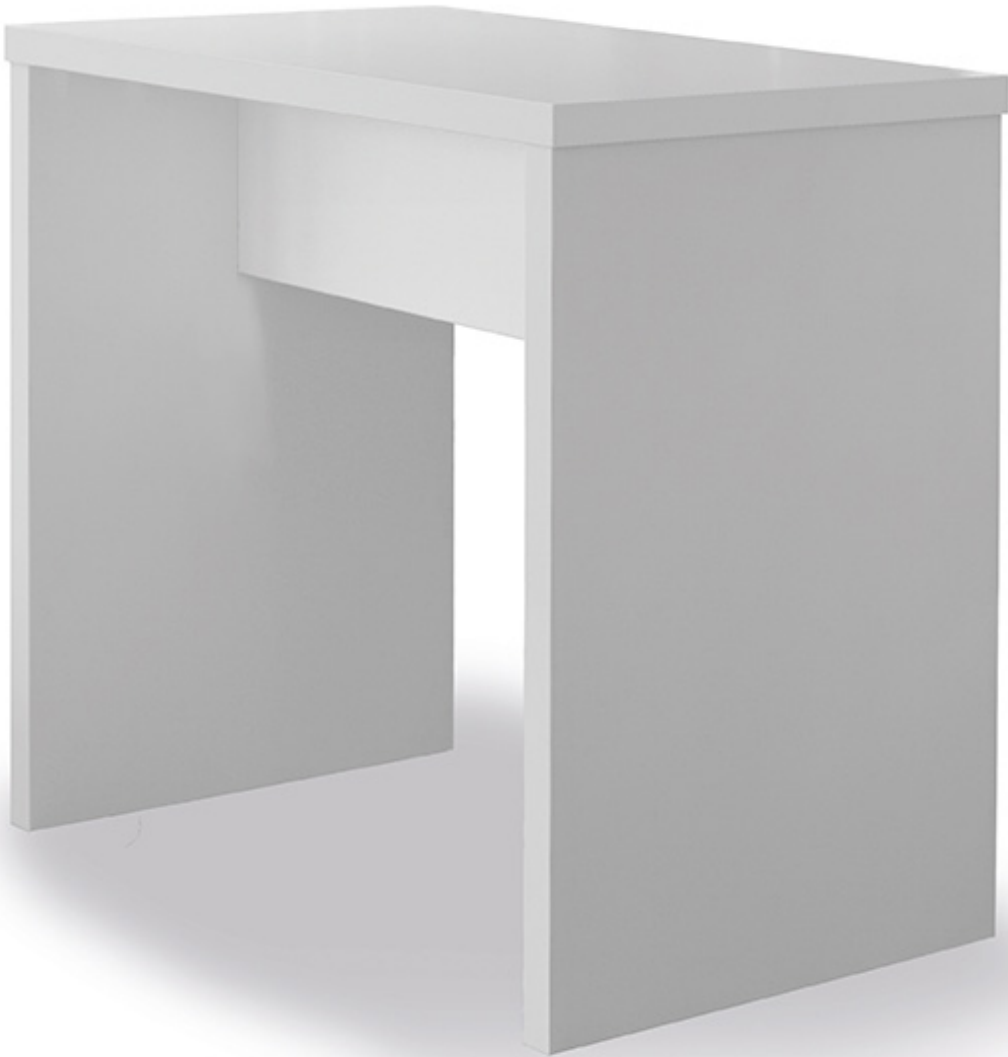
Accreditation.

N/A

Environment.

Recycled material content: N/A%
Recycleability of product: 34%

Counter High Table.



CCS Reference. AMENI-02-TIM

UNSPSC. 56101703

Task or loose. Loose

CCS product group level 2.
Desking.

Supplier Code.

BFR REF 2704**Manufacturer.**

Southernsbroadstock LTD

Lead Time.

4-6 Weeks.

Specification.

- Workstation top presented power to provide 2 x power point, 2 x USB power port per work point
- Built-in counter or free standing joinery item
- Warranty of 8 years
- No visible logo or branding tags, buttons, or plates

Dimensions.

High counter
Dimensions: Depth: 600-800mm
Height: 850-1010mm

Finishes.

Top material/finish:MFC standard colour range

Accreditation.

N/A

Environment.

Recycled material content: N/A%
Recycleability of product: N/A%

Coat Cupboard.



CCS Reference. AMENI-03-RMCa

UNSPSC. 56101530

Task or loose. Loose

CCS product group level 2.
Storage.

Supplier Code.

Coat Cupboard

Manufacturer.

Southernsbroadstock LTD

Lead Time.

4-6 Weeks.

Specification.

- 2 x coat rails high 1400mm and low 1050mm from finished floor surface
- Middle shelf above lowest rail
- D handles to doors – in contrast to cupboard colour
- Shelving with top panel for storage
- Warranty of 8 years
- No visible logo or branding tags, buttons, or plates

Dimensions.

Width:1200mm
Depth: 700mm
Height: Stipulated or manufacturer's standard height

Finishes.

Colour/finish: Manufacturers standard finish

Accreditation.

N/A

Environment.

Recycled material content: N/A%
Recycleability of product: N/A%



Lectern.

CCS Reference. SUNL-01

UNSPSC. 56101900

Task or loose. Loose

CCS product group level 2.
Accessories.

Supplier Code.

LEC01

Manufacturer.

Southernsbroadstock LTD

Lead Time.

4-6 Weeks.

Specification.

- Lectern with AV capability and power
- Height adjustable (optional),
- Vertical cable management

Dimensions.

W800 x D500 x H1100

Finishes.

Black White or Grey
Beech, Oak, Walnut MFC

Accreditation.

N/A

Environment.

Recycled material content: N/A%
Recycleability of product: 89%



Flip Chart.

CCS Reference. SUNL-02

UNSPSC. 56101900

Task or loose. Loose

CCS product group level 2.
Accessories.

Supplier Code.

VIZ PRO**Manufacturer.**

Southernsbroadstock LTD

Lead Time.

4-6 Weeks.

Specification.

- Foldable 4 leg flip chart.

Dimensions.

N/A

Finishes.

Brushed metal frame or powder coated metal frame.

Accreditation.

N/A

Environment.

Recycled material content: N/A%
Recycleability of product: N/A%

First Aid Room Bed.



CCS Reference. SUNL-03

UNSPSC. 56101900

Task or loose. Loose

CCS product group level 2.
Accessories.

Specification.

- Warranty of 8 years
- No visible logo or branding tags, buttons, or plates

Dimensions.

N/A

Finishes.

Top material finish: Polyurethane
breathable HTM & HBN compliant fabric

Base material finish: Stainless steel base
and rubber adjustable feet

Accreditation.

N/A

Environment.

Recycled material content: N/A%
Recycleability of product: N/A%

Supplier Code.

FIR01

Manufacturer.

Southernsbroadstock LTD

Lead Time.

4-6 Weeks.



Cushion.

CCS Reference. SUNL-04

UNSPSC. 25174602

Task or loose. Loose

CCS product group level 2.
Accessories.

Supplier Code.

CU2

Manufacturer.

SouthernsBroadstock LTD

Lead Time.

4-6 Weeks.

Specification.

- Cushion with removable cushion cover and stain resistant machine washable fabric
- Warranty of 8 years
- No visible logo or branding tags, buttons, or plates

Dimensions.

Width: 600mm
Depth: Not Applicable
Height: 400mm

Finishes.

Material finish: Stain resistant machine washable fabric.

Band - Class 1+

Accreditation.

N/A

Environment.

Recycled material content: N/A%
Recycleability of product: N/A%



Outdoor Table.

CCS Reference. SUNL-05

UNSPSC. 56101543

Task or loose. Loose

CCS product group level 2.
Desking.

Supplier Code.

CARST6/BS-60D

Manufacturer.

Southernsbroadstock LTD

Lead Time.

4-6 Weeks.

Specification.

- Heavy use commercial grade outdoor furniture
- 24/7 365 days a year weatherproof; capable of tethering to terrace
- Warranty of 8 years
- No visible logo or branding tags, buttons, or plates
- Can be bolted to the floor
- Not less than 10 kgs

Dimensions.

Width: 700/900/950/1000mm
Depth: 700/900/950/1000mm
Height: 735mm

Finishes.

Top material finish: Standard MFC
Finishes;Beech, Light Oak, Light Grey, German Beech, Portofino Cherry, White, Walnut, Maple and Verade Oak

Base material finish: Powder coated black base

Accreditation.

N/A

Environment.

Recycled material content: 22%
Recycleability of product: 89%

Outdoor Bench Seat.



Image shows table. Bench seating only in specification.

| | | |
|--|--|---|
| CCS Reference. SUNL-06 | Specification. | Dimensions. |
| UNSPSC. 48102001 | <ul style="list-style-type: none">· Outdoor banquette seating· Heavy use commercial grade outdoor furniture· 24/7 365 days a year weatherproof; capable of tethering to terrace· Warranty of 8 years· No visible logo or branding tags, buttons, or plates | Width: 1900mm Depth: 400mm Height: 400mm |
| Task or loose. Loose | | Finishes. |
| CCS product group level 2. Seating. | | Material finish: Powder coated solid aluminium. |
| | | Accreditation. |
| | | N/A |
| Supplier Code. | | Environment. |
| CARST6/BS-60D | | Recycled material content: 22% |
| Manufacturer. | | Recycleability of product: 89% |
| Southernsbroadstock LTD | | |
| Lead Time. | | |
| 4-6 Weeks. | | |

Outdoor Chair.



CCS Reference. SUNL-07

UNSPSC. 48102001

Task or loose. Loose

CCS product group level 2.
Seating.

Supplier Code.

Contour

Manufacturer.

Origin

Lead Time.

4-6 Weeks.

Specification.

- Heavy use commercial grade outdoor furniture
- 24/7 365 days a year weatherproof; capable of tethering to terrace
- Weight: 10kgs
- Warranty of 8 years
- No visible logo or branding tags, buttons, or plates

Dimensions.

N/A

Finishes.

Top material finish: Plastic seat

Base material finish: Powder coated metal base with or without legs

Accreditation.

N/A

Environment.

Recycled material content: N/A%

Recycleability of product: N/A%



Outdoor Coffee Table.

CCS Reference. SUNL-08

UNSPSC. 56101519

Task or loose. Loose

CCS product group level 2.
Desking.

Supplier Code.

Contour

Manufacturer.

Origin

Lead Time.

4-6 Weeks.

Specification.

- Heavy use commercial grade outdoor furniture
- 24/7 365 days a year weatherproof; capable of tethering to terrace
- Warranty of 8 years
- No visible logo or branding tags, buttons, or plates
- Weight should not be less than 10 kgs, unless project specific requires different weight.

Dimensions.

Width: 600mm

Height: 400-500mm

Finishes.

Top material finish: Waterproof

Base material finish: EPPC

Accreditation.

N/A

Environment.

Recycled material content: N/A%

Recycleability of product: N/A%



Outdoor Armchair.

CCS Reference. SUNL-09

UNSPSC. 56101522

Task or loose. Loose

CCS product group level 2.
Seating.

Supplier Code.

Contour

Manufacturer.

Origin

Lead Time.

4-6 Weeks.

Specification.

- Outdoor armchair. Heavy use commercial grade outdoor furniture
- 24/7 365 days a year weatherproof; capable of tethering to terrace
- Weight is 10kgs
- Warranty of 8 years
- No visible logo or branding tags, buttons, or plates

Dimensions.

N/A

Finishes.

Material finish: Powder coated metal

Accreditation.

N/A

Environment.

Recycled material content: N/A%

Recycleability of product: N/A%

Coat Hanger.



| | | |
|--|---|--|
| CCS Reference. SUNL-11 | Specification. | Dimensions. |
| UNSPSC. 56101900 | <ul style="list-style-type: none">· Coat hanger with a single hook· Warranty of 8 years· No visible logo or branding tags, buttons, or plates | N/A |
| Task or loose. Loose | | Finishes. |
| CCS product group level 2. Accessories. | | Material finish: Wooden with single metal hook |
| | | Accreditation. |
| | | N/A |
| Supplier Code. | | Environment. |
| C0T01 | | Recycled material content: N/A% |
| Manufacturer. | | Recycleability of product: 98% |
| Southernsbroadstock LTD | | |
| Lead Time. | | |
| 4-6 Weeks. | | |

Post Room Racks.



CCS Reference. SUNL-12

UNSPSC. 44111515

Task or loose. Loose

CCS product group level 2.
Storage.

Supplier Code.

Post Room Racks

Manufacturer.

Envosort

Lead Time.

4-6 Weeks.

Specification.

- Includes table
- As per project requirement: generically, pigeon holes, work surface/hanging with A3 size dividers in metal mesh on steel structure.
- Variable height to accommodate parcels.
- Wire basket to accommodate large parcels.
- To accommodate min A3.
- Warranty of 8 years
- No visible logo or branding tags, buttons, or plates

Dimensions (Compartment).

Width: 277mm
Depth: 750mm

Dimensions (Unit).

Width: 1200, 1500 & 2400mm
Height: 1948mm

Finishes.

Material finish: White frame and white shelves.

Accreditation.

N/A

Environment.

Recycled material content: N/A%
Recycleability of product: N/A%



Storage Racking / Security Room Racking.

| | | |
|---|---|---|
| CCS Reference. SUNL-14 UNSPSC. 44111515 Task or loose. Loose CCS product group level 2. Storage. | Specification. <ul style="list-style-type: none">· Warranty of 8 years· No visible logo or branding tags, buttons, or plates· Galvanized metal frame with ply shelves. | Dimensions. Width: 1000/800mm Depth: 500mm Height: 1800/2100 Finishes. Material finish: Galvanized metal frame with ply shelves. |
| Supplier Code. Security Room Racks Manufacturer. Southernsbroadstock LTD Lead Time. 4-6 Weeks. | | Accreditation. N/A Environment. Recycled material content: 28% Recycleability of product: 96% |



Storage Racking.

CCS Reference. STORAGE RACKING

UNSPSC. N/A

Task or loose. Loose

CCS product group level 2. Storage.

Supplier Code.

Storage Racking

Manufacturer.

Southernsbroadstock Ltd

Lead Time.

5 Weeks.

Specification.

- Warranty of 10 years
- Shelf loading 280kg (UDL)

Dimensions.

Width: 900mm
Depth: 400mm
Height: 2000mm

Finishes.

Material finish: Galvanized metal frame with 6 chipboard shelves

Accreditation.

N/A

Environment.

Recycled material content: N/A%
Recycleability of product: N/A%

Equipment Trolley.



CCS Reference. SUNL-15

UNSPSC. 56101900

Task or loose. Loose

CCS product group level 2.
Accessories.

Supplier Code.

Equipment Trolley

Manufacturer.

Southernsbroadstock LTD

Lead Time.

4-6 Weeks.

Specification.

- A compact industrial trolley with 90mm raised sides on three sides running on 4 castors with rubber tyres of 125mm diameter.
- Capacity (kg): 200.
- Castors/wheels (mm): 125 roller bearing, rubber tyre, all swivel.
- No. Of shelves: 2.
- Warranty of 8 years
- No visible logo or branding tags, buttons, or plates

Dimensions.

N/A

Finishes.

Material finish: Standard black metal finish.

Accreditation.

N/A

Environment.

Recycled material content: N/A%
Recycleability of product: N/A%



Chair Trolley.

CCS Reference. SUNL-16

UNSPSC. 56101900

Task or loose. Loose

CCS product group level 2.
Accessories.

Supplier Code.

Chair Trolley

Manufacturer.

Southernsbroadstock LTD

Lead Time.

4-6 Weeks.

Specification.

- S/s chair trolley w/ foot-operated break casters; to carry max 20 no stackable chairs, bumpers to exposed corners and handle bar.
- Warranty of 8 years
- No visible logo or branding tags, buttons, or plates
- To fit proposed stacking chairs on furniture schedules i.e., AMENI-01-STK, AMENI-01-STKa and BOOKA-01-STK. Not including the Business Events Centre (BEC)

Dimensions.

N/A

Finishes.

Material finish: As per product standard finish.

Accreditation.

N/A

Environment.

Recycled material content: N/A%

Recycleability of product: N/A%

Umbrella Stand.



CCS Reference. SUNL-17

UNSPSC. 56101900

Task or loose. Loose

CCS product group level 2.
Accessories.

Supplier Code.

125230**Manufacturer.**

AJ Products

Lead Time.

4-6 Weeks.

Specification.

- Open umbrella stand with drip tray at bottom to hold standard and telescopic umbrellas.
- Warranty of 8 years
- No visible logo or branding tags, buttons, or plates
- Capacity for 12 umbrellas with minimum 4 telescopic

Dimensions.

Diameter: 260mm

Height: 460mm

Finishes.

Material finish: Black

Accreditation.

N/A

Environment.

Recycled material content: N/A%

Recycleability of product: N/A%

Planters.



CCS Reference. SUNL-18

UNSPSC. 56101900

Task or loose. Loose

CCS product group level 2.
Accessories.

Supplier Code.

PLT0012

Manufacturer.

Get Potted

Lead Time.

4-6 Weeks.

Specification.

- Fiberglass planter in standard colour fibreglass finish.
- Warranty of 8 years
- No visible logo or branding tags, buttons, or plates

Dimensions.

Width: 500/700mm
Height: 750mm

Finishes.

Top/material finish: Standard Colour
Fibreglass finish.

Accreditation.

N/A

Environment.

Recycled material content: N/A%
Recycleability of product: N/A%



Reception Desk Lamp.

| | | |
|--|---|--|
| CCS Reference. SUNL-19 | Specification. | Dimensions. |
| UNSPSC. 39111510 | <ul style="list-style-type: none">· Warranty of 8 years· No visible logo or branding tags, buttons, or plates· Reception desk lamp with textile shade and a standard finish powder coated metal base.· Requirement for Business Events Centre or Main Reception Area Desk – so design to reflect and interpret these areas to provide a hospitality look and feel. | N/A |
| Task or loose. Loose | | Finishes. |
| CCS product group level 2. Accessories. | | Material finish: standard finish powder coated metal base. |
| | | Textile shade. |
| Supplier Code. | | Accreditation. |
| Liantral | | N/A |
| Manufacturer. | | Environment. |
| Liantral | | Recycled material content: N/A% |
| Lead Time. | | Recycleability of product: N/A% |
| 4-6 Weeks. | | |

Locker Caddies

With Strap.



CCS Reference. SUNL-20

UNSPSC. 56101900

Task or loose. Loose

CCS product group level 2.
Accessories.

Supplier Code.

Locker Caddies with Strap

Manufacturer.

Southernsbroadstock LTD

Lead Time.

4-6 Weeks.

Specification.

- Locker caddies with textile strap, as per product's standard finish.
- Caddie to fit into standard personal locker.
- Warranty of 8 years
- No visible logo or branding tags, buttons, or plates
- Fits into standard personal locker

Dimensions (Approx).

Width: 426mm
Depth: 125mm
Height: 311mm
Fits into standard personal locker

Finishes.

Material finish: Standard finish

Accreditation.

N/A

Environment.

Recycled material content: N/A%
Recycleability of product: N/A%



Workstation Lamp.

CCS Reference. SUNL-21

UNSPSC. 39111510

Task or loose. Loose

CCS product group level 2.
Accessories.

Supplier Code.

702/8384

Manufacturer.

Habitat

Lead Time.

4-6 Weeks.

Specification.

- Led workstation lamp
- Warranty of 8 years
- No visible logo or branding tags, buttons, or plates

Dimensions.

N/A

Finishes.

Material finish: Not Applicable

Accreditation.

N/A

Environment.

Recycled material content: N/A%

Recycleability of product: N/A%



Wall Mounted Flip Chart On Rail.

CCS Reference. SUNL-22

UNSPSC. 56101900

Task or loose. Loose

CCS product group level 2.
Accessories.

Supplier Code.

Nobo flip chart system

Manufacturer.

Southernsbroadstock LTD

Lead Time.

4-6 Weeks.

Specification.

- Flipchart with magnetic coated steel whiteboard backing.
- This is to be specified as part of the track system.
- The flip chart hangs off a wall mounted track system.
- Product should be coordinated with designer drawing package.
- Warranty of 8 years
- No visible logo or branding tags, buttons, or plates

Dimensions.

Width: 740mm
Height: 1070mm

Finishes.

Material finish: Coated Steel white board with White aluminium track system.

Accreditation.

N/A

Environment.

Recycled material content: N/A%
Recycleability of product: N/A%



Wall Mounted Track System.

To be used in conjunction with the flip chart above.

CCS Reference. SUNL-23

UNSPSC. 56101900

Task or loose. Loose

CCS product group level 2.
Accessories.

Supplier Code.

Nobo flip chart system

Manufacturer.

Southernsbroadstock LTD

Lead Time.

4-6 Weeks.

Specification.

- Track system for flip chart.
- Product should be coordinated with designer drawing package.
- Standard steel finish base frame with lockable castors.
- Warranty of 8 years
- No visible logo or branding tags, buttons, or plates
- To fit with SUNL-22 - used in conjunction with wall mounted flip chart SUNL-22

Dimensions.

N/A

Finishes.

Material finish: Standard Steel finish

Accreditation.

N/A

Environment.

Recycled material content: N/A%

Recycleability of product: N/A%

Mobile Writable Magnetic Whiteboard.



CCS Reference. SUNL-24

UNSPSC. 44120000

Task or loose. Loose

CCS product group level 2.
Accessories.

Supplier Code.

Mobile Whiteboard

Manufacturer.

Southernsbroadstock LTD

Lead Time.

4-6 Weeks.

Specification.

- Mobile writable/magnetic whiteboard.
 - Standard steel finish base frame with lockable castors.
 - Warranty of 8 years
 - No visible logo or branding tags, buttons, or plates
- Robust frame with a range of finishes

Dimensions.

Width: 1200mm

Height: 1570mm

Finishes.

Material finish: Standard Steel finish

Accreditation.

N/A**Environment.**

Recycled material content: N/A%

Recycleability of product: N/A%

Tool Caddy.



CCS Reference. SUNL-25

UNSPSC. 56101900

Task or loose. Loose

CCS product group level 2.
Accessories.

Specification.

- Plastic tool box caddy to fit lockers AMENI-01-RLK, AMENI-01-RLKa, AMENI-01-RLKb, AMENI-01-RLKc
- Warranty of 8 years
- No visible logo or branding tags, buttons, or plates

Dimensions.

N/A

Finishes.

N/A

Accreditation.

N/A

Supplier Code.

Plastic Tool Caddy

Manufacturer.

Southernsbroadstock LTD

Lead Time.

4-6 Weeks.

Environment.

Recycled material content: N/A%
Recycleability of product: N/A%



Free Standing Bins

General Waste.

| | | |
|--|---|---|
| CCS Reference. SUNL-27 | Specification. | Dimensions. |
| UNSPSC. 56101900 | <ul style="list-style-type: none">· Free standing bins: general waste· 50 Litre· Warranty of 8 years· No visible logo or branding tags, buttons, or plates | Width: 295mm Depth: 510mm Height: 680mm |
| Task or loose. Loose | | Finishes. |
| CCS product group level 2. Accessories. | | Material finish: Silver Sage |
| | | Accreditation. |
| | | N/A |
| Supplier Code. | | Environment. |
| General Waste Bin | | Recycled material content: N/A% |
| Manufacturer. | | Recycleability of product: N/A% |
| Southernsbroadstock LTD | | |
| Lead Time. | | |
| 4-6 Weeks. | | |

Free Standing Bins

General Waste.



CCS Reference. SUNL-27a

UNSPSC. 56101900

Task or loose. Loose

CCS product group level 2.
Accessories.

Specification.

- Brushed stainless steel free standing butterfly bins with foot pedal opening
- General waste
- 50 Litre

Dimensions.

Width: 264mm
Depth: 592mm
Height: 660mm

Finishes.

Material finish: Brushed steel

Accreditation.

N/A

Environment.

Recycled material content: N/A%
Recycleability of product: N/A%

Supplier Code.

General Waste Bin

Manufacturer.

Simplehuman

Lead Time.

4-6 Weeks.





Free Standing Bins

Recycling.

CCS Reference. SUNL-28

UNSPSC. 56101900

Task or loose. Loose

CCS product group level 2.
Accessories.

Specification.

- Plastic free standing bins: recycling
- 50 Litre
- Warranty of 8 years
- No visible logo or branding tags, buttons, or plates

Dimensions.

Width: 295mm
Depth: 510mm
Height: 680mm

Finishes.

Material finish: Plastic

Accreditation.

N/A

Environment.

Recycled material content: N/A%
Recycleability of product: N/A%

Supplier Code.

Freestanding Bin: Recycling

Manufacturer.

Southernsbroadstock LTD

Lead Time.

4-6 Weeks.

Free Standing Bins

Recycling.



CCS Reference. SUNL-28a

UNSPSC. 56101900

Task or loose. Loose

CCS product group level 2.
Accessories.

Supplier Code.

Freestanding Bin: Recycling

Manufacturer.

Simplehuman

Lead Time.

4-6 Weeks.

Specification.

- Brushed stainless steel free standing butterfly bins with foot pedal opening: recycling
- 50 Litre
- Warranty of 8 years
- No visible logo or branding tags, buttons, or plates

Dimensions.

Width: 264mm
Depth: 592mm
Height: 660mm

Finishes.

Material finish: Plastic

Accreditation.

N/A

Environment.

Recycled material content: N/A%
Recycleability of product: N/A%





Wall Mounted Clock.

CCS Reference. SUNL-29

UNSPSC. 56101900

Task or loose. Loose

CCS product group level 2.
Accessories.

Supplier Code.

WMCL01

Manufacturer.

Moonport

Lead Time.

4-6 Weeks.

Specification.

- Decorative wall clock.
- Product should be coordinated with designer drawing package.
- Product's standard finish.
- Warranty of 8 years
- No visible logo or branding tags, buttons, or plates

Dimensions.

Width: 330mmØ

Finishes.

Material finish: Standard finish

Accreditation.

N/A

Environment.

Recycled material content: N/A%
Recycleability of product: N/A%



Wall Mounted Magnetic Whiteboards.

| | | |
|--|--|---|
| CCS Reference. SUNL-30 | Specification. | Dimensions. |
| UNSPSC. 44120000 | <ul style="list-style-type: none">· Writable / magnetic whiteboard.· Wall mounted magnetic whiteboards.· Product should be coordinated with designer drawing package.· Warranty of 8 years· No visible logo or branding tags, buttons, or plates | Width: 900/1200/1200/1800/2400/2700mm Height: 600mm/900mm/1200mm(x4) |
| Task or loose. Loose | | Finishes. |
| CCS product group level 2. Accessories. | | N/A |
| Supplier Code. | | Accreditation. |
| MAG01 | | N/A |
| Manufacturer. | | Environment. |
| VIZ PRO | | Recycled material content: N/A% Recycleability of product: N/A% |
| Lead Time. | | |
| 4-6 Weeks. | | |

Magazine Rack.



CCS Reference. SUNL-31

UNSPSC. 56101900

Task or loose. Loose

CCS product group level 2.
Accessories.

Specification.

- Ash wood handle for easy carrying.
- Dual compartment for various sizes of magazines, books and journals.
- Warranty of 8 years
- No visible logo or branding tags, buttons, or plates

Dimensions.

Width: 387mm
Depth: 356mm
Height: 210mm

Finishes.

Handle material finish: Ash wood handle
Base material finish: Standard black.

Supplier Code.

MAG00215

Manufacturer.

Southernsbroadstock LTD

Lead Time.

4-6 Weeks.

Accreditation.

N/A

Environment.

Recycled material content: N/A%
Recycleability of product: N/A%



Freestanding Acoustic Divider.

CCS Reference. SUNL-32

UNSPSC. 23152102

Task or loose. Loose

CCS product group level 2.
Accessories.

Supplier Code.

ACNA01

Manufacturer.

Southernsbroadstock LTD

Lead Time.

4-6 Weeks.

Specification.

- Free standing acoustic divider on castors
- Baseplate colour in black
- Single board cell
- Warranty of 8 years
- No visible logo or branding tags, buttons, or plates

Dimensions.

Width: 320mm
Height: 1500mm

Finishes.

Top material finish: Fabric
Base material finish: White

Accreditation.

N/A

Environment.

Recycled material content: N/A%
Recycleability of product: N/A%



Flip Dining Table.

CCS Reference. SUNL-33

UNSPSC. 56101543

Task or loose. Loose

CCS product group level 2.
Desking.

Supplier Code.

Flip Dining Table

Manufacturer.

Southernsbroadstock LTD

Lead Time.

4-6 Weeks.

Specification.

- Flexible bistro table.
- Folding mechanism: die-cast zinc.

Dimensions.

N/A

Finishes.

Table top: melamine faced in white with smooth straight plastic edge.

Powder-coated steel.

Feet glides to suit floor finish.

Accreditation.

N/A**Environment.**

Recycled material content: N/A%

Recycleability of product: 72%



Demountable Dining Table.

| | | |
|--|---|---|
| CCS Reference. SUNL-34 | Specification. | Dimensions. |
| UNSPSC. 56101543 | · Demountable table - removable legs and table top (t&tt braces). | N/A |
| Task or loose. Loose | | Finishes. |
| CCS product group level 2. Desking. | | Table top: melamine faced in white with smooth straight plastic edge. |
| | | Powder-coated steel. |
| | | Feet glides to suit floor finish. |
| Supplier Code. | | Accreditation. |
| Demountable Dining Table | | N/A |
| Manufacturer. | | Environment. |
| Southernsbroadstock LTD | | Recycled material content: N/A% |
| Lead Time. | | Recycleability of product: N/A% |
| 4-6 Weeks. | | |



Floor Lamp.

CCS Reference. SUNL-36

UNSPSC. 56101900

Task or loose. Loose

CCS product group level 2.
Accessories.

Supplier Code.

ARQUER170

Manufacturer.

Versanora

Lead Time.

4-6 Weeks.

Specification.

- Floor standing lamp with hidden light source behind acrylic diffuser.

Dimensions.

N/A

Finishes.

Standard range colour painted steel finish.

Accreditation.

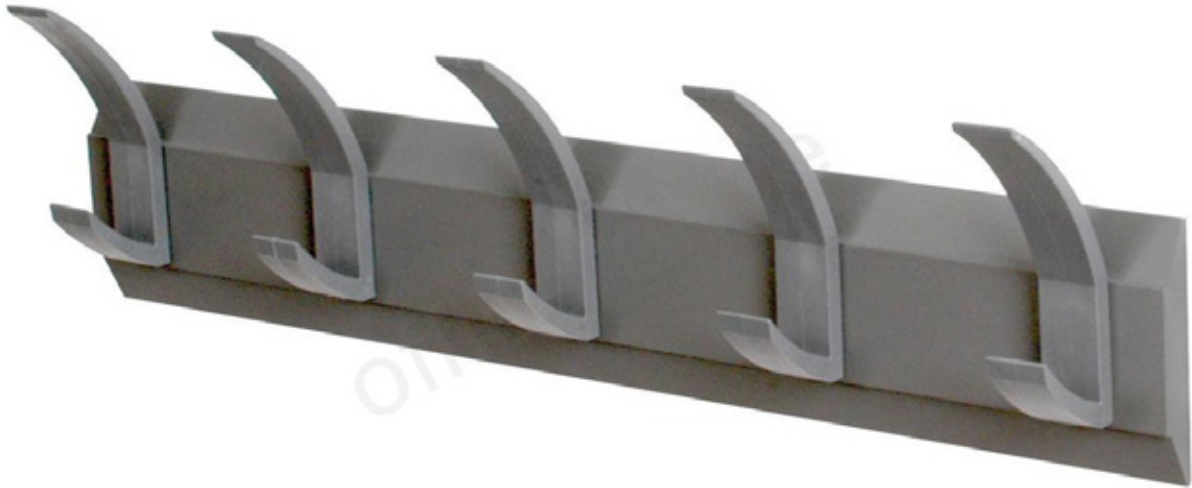
N/A

Environment.

Recycled material content: N/A%

Recycleability of product: N/A%

Coat Hooks.



| | | |
|-----------------------------------|----------------------------|---------------------------------|
| CCS Reference. SUNL-37 | Specification. | Dimensions. |
| UNSPSC. 56101900 | · Wall mounted coat hooks. | N/A |
| Task or loose. Loose | | Finishes. |
| CCS product group level 2. | | Painted timber. |
| Accessories. | | Accreditation. |
| | | N/A Environment. |
| Supplier Code. | | Recycled material content: N/A% |
| C0T01 | | Recycleability of product: N/A% |
| Manufacturer. | | |
| Southernsbroadstock Ltd | | |
| Lead Time. | | |
| 4-6 Weeks. | | |

Wall Mounted Picture Frames.



CCS Reference. SUNL-38

UNSPSC. 56101900

Task or loose. Loose

CCS product group level 2.
Accessories.

Supplier Code.

AL002250

Manufacturer.

Allington

Lead Time.

4-6 Weeks.

Specification.

- Wall mounted picture frames

Dimensions.

Width: 420mm

Height: 297mm

Width: 203mm

Height: 252mm

Width: 304mm

Height: 1143mm

Width: 500mm

Height: 600mm

Width: 650mm

Height: 450mm

Finishes.

Black frame.

Accreditation.

N/A

Environment.

Recycled material content: N/A%

Recycleability of product: N/A%



Wall Mounted Shoe Rack.

| | | |
|-----------------------------------|-----------------------|---------------------------------|
| CCS Reference. SUNL-39 | Specification. | Dimensions. |
| UNSPSC. 56101900 | · Shoe rack | N/A |
| Task or loose. Loose | | Finishes. |
| CCS product group level 2. | | Chrome |
| Accessories. | | Accreditation. |
| | | N/A |
| Supplier Code. | | Environment. |
| SH2000195 | | Recycled material content: N/A% |
| Manufacturer. | | Recycleability of product: N/A% |
| Disply | | |
| Lead Time. | | |
| 4-6 Weeks. | | |



Parasol.

CCS Reference. SUNL-40

UNSPSC. 56101900

Task or loose. Loose

CCS product group level 2.
Accessories.

Supplier Code.

Parasol with concrete base

Manufacturer.

SouthernsBroadstock Ltd

Lead Time.

4-6 Weeks.

Specification.

- Outdoor parasol
- Concrete base

Dimensions.

N/A

Finishes.

As per product standard finish.

Stainless steel tube with white high tech polyester fabric.

Accreditation.

N/A

Environment.

Recycled material content: N/A%

Recycleability of product: N/A%



CPU Holder.

CCS Reference. SUNL-41

UNSPSC. 56101900

Task or loose. Loose

CCS product group level 2.
Accessories.

Supplier Code.

CHF2208

Manufacturer.

Southernsbroadstock Ltd

Lead Time.

4-6 Weeks.

Specification.

- CPU holder securely clamps and suspends under workstation creating the illusion of it floating under the work surface.

Dimensions.

N/A

Finishes.

White, Silver or Black.

Accreditation.

N/A

Environment.

Recycled material content: N/A%
Recycleability of product: N/A%



Writing Pad

For Workstation.

| | | |
|-----------------------------------|---------------------------------|---------------------------------|
| CCS Reference. SUNL-42 | Specification. | Dimensions. |
| UNSPSC. 56101900 | · Writing pad for work stations | W1000 X D600mm |
| Task or loose. Loose | | Finishes. |
| CCS product group level 2. | | Black rubber/vinyl |
| Accessories. | | Accreditation. |
| | | N/A |
| Supplier Code. | | Environment. |
| Writing Pad | | Recycled material content: N/A% |
| Manufacturer. | | Recycleability of product: N/A% |
| Southernsbroadstock LTD | | |
| Lead Time. | | |
| 4-6 Weeks. | | |



Perspex Signs

A4.

| | | |
|-----------------------------------|-----------------------|---------------------------------|
| CCS Reference. SUNL-43 | Specification. | Dimensions. |
| UNSPSC. 56101900 | · N/A | N/A |
| Task or loose. Loose | | Finishes. |
| CCS product group level 2. | | N/A |
| Accessories. | | Accreditation. |
| | | N/A |
| Supplier Code. | | Environment. |
| PER04 | | Recycled material content: N/A% |
| Manufacturer. | | Recycleability of product: N/A% |
| Sky Direct | | |
| Lead Time. | | |
| 4-6 Weeks. | | |



Perspex Signs

A5.

| | | |
|-----------------------------------|-----------------------|---------------------------------|
| CCS Reference. SUNL-44 | Specification. | Dimensions. |
| UNSPSC. 56101900 | · N/A | N/A |
| Task or loose. Loose | | Finishes. |
| CCS product group level 2. | | N/A |
| Accessories. | | Accreditation. |
| | | N/A |
| Supplier Code. | | Environment. |
| PER05 | | Recycled material content: N/A% |
| Manufacturer. | | Recycleability of product: N/A% |
| Sky Direct | | |
| Lead Time. | | |
| 4-6 Weeks. | | |



White Board Eraser.

| | | |
|--|-----------------------|---------------------------------|
| CCS Reference. SUNL-45 | Specification. | Dimensions. |
| UNSPSC. 56101900 | · N/A | N/A |
| Task or loose. Loose | | Finishes. |
| CCS product group level 2. Accessories. | | N/A |
| | | Accreditation. |
| Supplier Code. | | N/A Environment. |
| Whiteboard Eraser | | Recycled material content: N/A% |
| Manufacturer. | | Recycleability of product: N/A% |
| Sky Direct | | |
| Lead Time. | | |
| 4-6 Weeks. | | |



Magnetic Pen Holder.

CCS Reference. SUNL-46

UNSPSC. 56101900

Task or loose. Loose

CCS product group level 2.
Accessories.

Specification.

- Bucket design
- Includes pens.
- To be suitable for writeable whiteboard on project

Dimensions.

N/A

Finishes.

N/A

Accreditation.

N/A

Environment.

Recycled material content: N/A%
Recycleability of product: N/A%

Supplier Code.

Magnetic Pen Holder

Manufacturer.

Wantouth / Niceday

Lead Time.

4-6 Weeks.



Tub Chair.

CCS Reference. SUNL-47

UNSPSC. 56101900

Task or loose. Loose

CCS product group level 2.
Accessories.

Supplier Code.

TUB1

Manufacturer.

Southernsbroadstock LTD

Lead Time.

4-6 Weeks.

Specification.

- Mobile Tub Chair optional castors
- Chair with back and arms
- Upholstered Combustion Modified High Resilience (CMHR) foam

Dimensions.

N/A

Finishes.

- Martindale Rubs 30,000 plus
- Fabric Band 3

Accreditation.

N/A

Environment.

Recycled material content: N/A%
Recycleability of product: N/A%



Coat Stand.

CCS Reference. SUNL-48

UNSPSC. 56101900

Task or loose. Loose

CCS product group level 2.
Accessories.

Supplier Code.

CST012**Manufacturer.**

Southernsbroadstock LTD

Lead Time.

4-6 Weeks.

Specification.

- 12 Person peg with positioned higher and lower pegs for full accessibility for all
- Upright Design

Dimensions.

N/A

Finishes.

N/A

Accreditation.

N/A

Environment.

Recycled material content: N/A%
Recycleability of product: N/A%

Power Module.



CCS Reference. SUNL-50

UNSPSC. 56101900

Task or loose. Loose

CCS product group level 2.
Accessories.

Specification.

- Pose Unit Comprising 1x twin USB charge point, 2m lead to 3-pin UK plug
- Dimensions for the standard height and not the smaller height version.

Dimensions.

Height: 1000mm
Diameter: 300mm

Finishes.

White Cone – Coloured Bezel
Optional black finish with grey bezel

Supplier Code.

PS005**Manufacturer.**

OE Electrics

Lead Time.

4-6 Weeks.

Accreditation.

N/A

Environment.

Recycled material content: 12%
Recycleability of product: 85%

Power Module.



CCS Reference. SUNL-51

UNSPSC. 56101900

Task or loose. Loose

CCS product group level 2.
Accessories.

Supplier Code.

PS006

Manufacturer.

OE Electrics

Lead Time.

4-6 Weeks.

Specification.

- Pose Unit Comprising 1x UK 3-Pin socket, 2m lead to 3-pin UK plug
- Dimensions for the standard height and not the smaller height version.

Dimensions.

Height: 1000mm
Diameter: 300mm

Finishes.

White Cone – Coloured Bezel
Optional black finish with grey bezel

Accreditation.

N/A

Environment.

Recycled material content: N/A%
Recycleability of product: N/A%



Principal Office Space

Cantilevered Floor Lamp.

| | | |
|--|--|--|
| CCS Reference. SUNL-52 | Specification. | Dimensions. |
| UNSPSC. 56101900 | <ul style="list-style-type: none">· Floor standing feature lamp· Cantilevered shade and frame· Dimmable as standard; Mains dimmable / TRIAC.· Light Source: 3x 4W LED E12/G9 lamp (supplied) 120/240V, 2700k LED lamp only MAX 12W· 26.5kg net, 28kg gross· Cord: 200cm fabric cord provided· Inline foot switch on cord 5amp plug option. | Shade diameter: 360mm Depth (Cantilever): 445mm Height: 1550mm |
| Task or loose. Loose | | Finishes. |
| CCS product group level 2. Accessories. | | Base: Brushed brass weighted base. Shade: Lacquered as standard. Frame: Powder-coated metalwork. Custom finishes available. |
| Supplier Code. | | Accreditation. |
| Vali | | N/A |
| Manufacturer. | | Environment. |
| Liang & Eimil | | Recycled material content: N/A% Recycleability of product: N/A% |
| Lead Time. | | |
| 4-6 Weeks | | |



Principal Office Space

Cantilevered Floor Lamp (Option).

| | | |
|--|--|--|
| CCS Reference. SUNL-52 | Specification. | Dimensions. |
| UNSPSC. 56101900 | <ul style="list-style-type: none">· Floor standing feature lamp· Cantilevered shade and frame· Dimmable as standard; Mains dimmable / TRIAC.· Light Source: 3x 4W LED E12/G9 lamp (supplied) 120/240V, 2700k LED lamp only MAX 12W· 26.5kg net, 28kg gross· Cord: 200cm fabric cord provided· Inline foot switch on cord 5amp plug option. | Shade diameter: 360mm Height: 1400mm |
| Task or loose. Loose | | Finishes. |
| CCS product group level 2. Accessories. | | Base: Brushed brass weighted base. Shade: Lacquered as standard. Frame: Powder-coated metalwork. Custom finishes available. |
| Supplier Code. | | Accreditation. |
| 46449 | | N/A |
| Manufacturer. | | Environment. |
| Nordlux | | Recycled material content: N/A% Recycleability of product: N/A% |
| Lead Time. | | |
| 4-6 Weeks | | |



Principal Office Space Desk Lamp.

CCS Reference. SUNL-53

UNSPSC. 56101900

Task or loose. Loose

CCS product group level 2.
Accessories.

Supplier Code.

Torun

Manufacturer.

Heathfield & Co

Lead Time.

4-6 Weeks

Specification.

- Dimming: Non-dimmable as standard, Mains dimmable / TRIAC available 5amp plug available
- Light Source: 1x LED module - 15.5W 24V 2700K
- Driver: 230V - 1 x 20W LED Integrated driver 110V - 1 x 60W LED Wall plug driver
- Weight: 6.8kg net, 8.5kg gross
- Cord: 200cm fabric cord provided Inline switch on cord
- Inline foot switch on cord 5amp plug option.
- Yacht Fixing: Yacht / Surface mounting available

Dimensions.

Width: 220mm
Height: 250mm

Finishes.

Brushed brass lacquered as standard
Custom finishes available.

Accreditation.

N/A

Environment.

Recycled material content: N/A%
Recycleability of product: N/A%



Principal Office Space Desk Lamp (Option).

| | | |
|--|--|--|
| CCS Reference. SUNL-53 | Specification. | Dimensions. |
| UNSPSC. 56101900 | <ul style="list-style-type: none">· Dimming: Non-dimmable as standard, Mains dimmable / TRIAC available 5amp plug available· Light Source: 1x LED module - 15.5W 24V 2700K· Driver: 230V - 1 x 20W LED Integrated driver 110V - 1 x 60W LED Wall plug driver· Weight: 6.8kg net, 8.5kg gross· Cord: 200cm fabric cord provided Inline switch on cord· Inline foot switch on cord 5amp plug option.· Yacht Fixing: Yacht / Surface mounting available | Width: 360mm Depth: 112mm Height: 550mm |
| Task or loose. Loose | | Finishes. |
| CCS product group level 2. Accessories. | | Brushed brass lacquered as standard Custom finishes available. |
| Supplier Code. | | Accreditation. |
| 110133 | | N/A |
| Manufacturer. | | Environment. |
| Endon | | Recycled material content: N/A% Recycleability of product: N/A% |
| Lead Time. | | |
| 4-6 Weeks | | |



Racking for Drying Rooms.

CCS Reference. SUNL-54

UNSPSC. N/A

Task or loose. Loose

CCS product group level 2.
Accessories.

Supplier Code.

Drying Rack

Manufacturer.

Black & Decker

Lead Time.

4-6 Weeks

Specification.

- Clothes drying rack
- Available with and without power (heated)
- Prices will adjust on a project by project basis

Dimensions.

Width: 680mm
Depth: 730mm
Height: 1440mm

Finishes.

Cool Grey

Accreditation.

N/A

Environment.

Recycled material content: N/A%
Recycleability of product: N/A%

Power Module.



CCS Reference. SUNT-03

UNSPSC. 56101900

Task or loose. Task

CCS product group level 2.
Accessories.

Specification.

- Workstation top fixing bracket: clamp bracket. 2x power plug and 2x usb with fast charge power.

Dimensions.

N/A

Finishes.

White encasing with grey fascia

Accreditation.

N/A

Supplier Code.

Power Module

Manufacturer.

ABL

Lead Time.

4-6 Weeks.

Environment.

Recycled material content: N/A%

Recycleability of product: N/A%

Furnishing environments to flourish.

Robert Moore

CCS Sector Lead

T: 07805 347 142

E: robert.moore@southernsbroadstock.co.uk

Bolton

Unit 1 Easter Park

Wingates Industrial Estate

Bolton, BL5 3XU

T: 01204 691 008

Macclesfield

Lyme Green Business Park, Brunel Road,

Macclesfield, Cheshire, SK11 0TA

T: 01625 431 979



southernsbroadstock.co.uk