

Product

book

Client : DFE

Project : Lot 2- Fitted Furniture

Contents

Practical Rooms	3-12
Science Laboratory	12-14
Other Spaces	15

Practical rooms

Worktop (Solid grade laminate)

Compliant with DFE specification:

- a. Minimum 16mm solid grade laminate, with moisture, heat (up to 180o) and chemical resistance
- b. Edges chamfered and polished smooth
- c. Minimum 16mm thick solid grade laminate end panel where appropriate
- d. All fixings to walls/floors tamper proof bolts
- e. Minimum 15mm x 15mm solid wood cover bead
- f. Minimum 40mm x 22mm softwood wall bearer to underside of worktop where appropriate
- g. Minimum 40mm x 16mm solid grade laminate downstand to underside of worktop where appropriate
- h. 3no. 450mm drainage grooves scribed into solid grade laminate where appropriate.
- i. Minimum 8mm laminated removable cover panel with tamper resistant fittings where appropriate.
- j. Minimum 18mm thick MDF infill panel with high pressure applied laminate with tamper resistant fittings where appropriate.

Sizes:

Various Lengths x 600mm Deep x 16mm Thick
 Various Lengths x 750mm Deep x 16mm Thick
 Various Lengths x 1200mm Deep x 16mm Thick

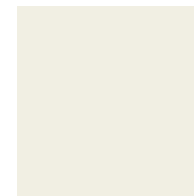
Allowances made for the worktop, bearer, upstand and jointing bolts.

End panels, drainage grooves, cover panels and infill panels priced against design drawings for each requirement.

Warranty: 10 years



E0-00
WHITE



E0-015
PASTEL GREY



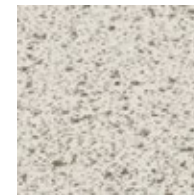
E0-02
SILVER GREY



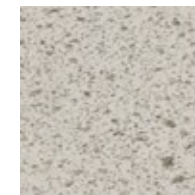
E0-04
MID GREY



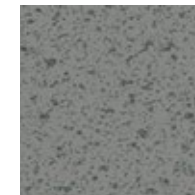
S0-00
SPECKLE WHITE



S0-15
SPECKLE GREY



S0-02
SPECKLE SILVER GREY



S0-04
SPECKLE MID GREY

NB Other colours available on request

Practical rooms

Worktop (Laminate on core material)

Compliant with DFE specification:

- a. 25mm minimum manufactured board core with laminate and balance laminate edged with timber, post formed or 2mm ABS edge.
- b. Minimum 18mm thick manufactured board laminated end panel with 2mm ABS edge where appropriate.
- c. All fixings to walls/floors tamper proof bolts.
- d. Laminates shall meet the requirements of BS EN 438-3 and 4:2016 and BS EN 438-9: 2017.
- e. Minimum 40mm x 16mm softwood wall bearer to underside of worktop where appropriate.
- f. Minimum 40mm x 22mm MDF, melamine faced downstand with 2mm ABS lip on front edge to top of worktop where appropriate.
- g. Minimum 8mm laminated removable cover panel with tamper resistant fittings where appropriate.
- h. Minimum 18mm thick MDF infill panel with high pressure applied laminate with tamper resistant fittings where appropriate.

Sizes:

Various Lengths x 600mm Deep x 25mm Thick
Various Lengths x 750mm Deep x 25mm Thick
Various Lengths x 1200mm Deep x 25mm Thick

Allowances made for the worktop, bearer, upstand and jointing bolts.

End panels, cover panels and infill panels priced against design drawings for each requirement.

Warranty: 10 years



8685
SNOW WHITE



0191
COOL GREY



0171
SLATE GREY



6299
COBALT GREY

NB Other colours available on request

Practical rooms

Cantilevered double or single leg frame

Compliant with DFE specification:

- a. Fully welded 40mm x 25mm tubular mild steel legs, epoxy powder coated.
- b. Option of inset leg for wet service run
- c. Heavy duty adjustable feet with floor fixings.
- d. Minimum 2no. fixings to wall and 4no. to worktop
- e. Assumed for use at 1000mm centres.

Varying heights and depths

Warranty: 10 years



COLOUR OPTIONS: White, Light Grey, Dark Grey, Black

NB Other colours available on request

Practical rooms

Underbench cupboard (2 doors)

Compliant with DFE specification:

- a. Fully compliant with BS EN 16121 (or equivalent).
- b. Carcass, minimum of 18mm thickness with high pressure applied laminate on both faces, edged in pressure applied matching 2mm thick ABS, rigid doweled construction.
- c. Top, manufactured board, minimum of 18mm thickness edged in pressure applied 2mm thick ABS, removable.
- d. 1 shelf, manufactured board, minimum 18mm thickness with high pressure laminate or melamine faced on both faces, edged in pressure applied matching 2mm thick ABS, mounted on minimum of 4 no. 5mm steel pins housed in pre-drilled holes in carcass.
- e. Plinth minimum 100mm high 15mm thick laminate moisture resistant manufactured board recessed with sealing strip and corner trims.
- f. Adjustable feet set behind plinth.
- g. Doors, manufactured board with high pressure applied laminate or melamine faced on both faces, minimum of 18mm thickness edged in pressure applied 2mm thick ABS option of lock with master keys.
- h. Minimum 3no. 270° exposed corrosion resistant proof knuckle hinges with through fixed hinge plates.

Dimensions (mm)

1050 W x 455 D x Various Heights

Locks are available as an option.

Warranty: 10 years



COLOUR OPTIONS: **Carcass:** White or grey **Doors :** White, Light Grey, Dark Grey

NB Other colours available on request

Practical rooms

Underbench cupboard (1 door)

Compliant with DFE specification:

- a. Fully compliant with BS EN 16121:2013+A1:2017 (or equivalent).
- b. Carcass, minimum of 18mm thickness manufactured board with high pressure applied laminate or melamine faced on both faces, edged in pressure applied matching 2mm ABS, rigid doweled construction.
- c. Backing board, minimum 8mm thickness MFC set into carcass back, removable.
- d. 1no. shelf, minimum of 18mm thickness manufactured board with high pressure applied laminate or melamine faced on both faces, edged in pressure applied matching 2mm thick ABS, mounted on minimum of 4 no. 5mm steel pins housed in pre-drilled holes in carcass.
- e. Plinth minimum 100mm high 15mm thick laminate moisture resistant manufactured board recessed with sealing strip and corner trims.
- f. Adjustable feet set behind plinth.
- g. Door, manufactured board with high pressure applied laminate on both faces, minimum of 18mm thickness edged in pressure applied 2mm thick ABS, option of lock with master keys.
- h. Minimum 2no. 270° exposed corrosion resistant proof knuckle hinges with through fixed hinge plates.

Dimensions (mm)

415 W x 465 D x Various Heights

Locks are available as an option.

Warranty: 10 years



COLOUR OPTIONS: **Carcass:** White or grey **Doors :** White, Light Grey, Dark Grey

NB Other colours available on request

Practical rooms

Underbench 12, 18 or 24 tray unit (with 2 doors)

Compliant with DFE specification:

- a. Fully compliant with BS EN 16121:2013+A1:2017 (or equivalent).
- b. Carcass, minimum of 18mm thickness manufactured board with high pressure applied laminate or melamine faced on both faces, edged in pressure applied matching 2mm ABS, rigid dowelled construction.
- c. Backing board, minimum 8mm thickness MFC set into carcass back, removable.
- d. 1no. shelf, minimum of 18mm thickness manufactured board with high pressure applied laminate or melamine faced on both faces, edged in pressure applied matching 2mm thick ABS, mounted on minimum of 4 no. 5mm steel pins housed in pre-drilled holes in carcass.
- e. Plinth minimum 100mm high 15mm thick laminate moisture resistant manufactured board recessed with sealing strip and corner trims.
- f. Adjustable feet set behind plinth.
- g. Door, manufactured board with high pressure applied laminate on both faces, minimum of 18mm thickness edged in pressure applied 2mm thick ABS, option of lock with master keys.
- h. Minimum 2no. 270° exposed corrosion resistant proof knuckle hinges with through fixed hinge plates.

Dimensions (mm)

1050 W x 455 D x Various Heights

Locks are available as an option.

Warranty: 10 years



12 Trays

18 Trays

24 Trays

COLOUR OPTIONS: **Carcass:** White or grey **Doors :** White, Light Grey, Dark Grey

NB Other colours available on request. Multiple tray colour options.

Practical rooms

Underbench 12, 18 or 24 tray unit (without doors)

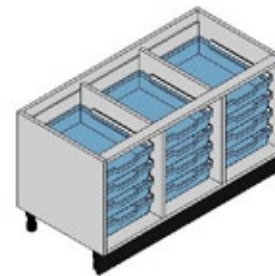
Compliant with DFE specification:

- Fully compliant with BS EN 16121:2013+A1:2017 (or equivalent).
- Carcass, minimum of 18mm thickness manufactured board with high pressure applied laminate on both faces, edged in pressure applied matching 2mm thick ABS, rigid doweled construction.
- Backing board, minimum 8mm thickness MFC set into carcass back, removable, laminated on one side.
- Plinth min. 100mm high 15mm thick laminate moisture resistant manufactured board recessed with sealing strip and corner trims.
- Adjustable feet set behind plinth.
- Runners must capture tray top and bottom, manufacture

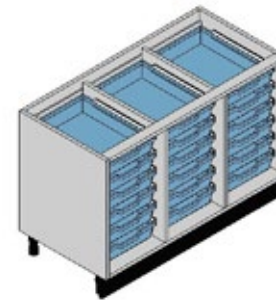
Dimensions (mm)

1050 W x 455 D x Various Heights

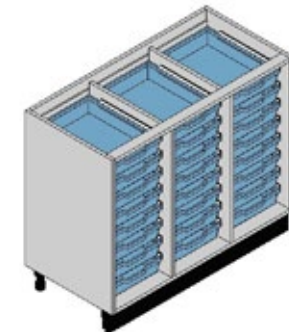
Warranty: 10 years



12 Trays



18 Trays



24 Trays

COLOUR OPTIONS: **Carcass:** White or grey **Doors :** White, Light Grey, Dark Grey

NB Other colours available on request. Multiple tray colour options.

Practical rooms

Underbench cupboard (2 doors)

Compliant with DFE specification:

- a. Fully compliant with BS EN 16121+A1:2017 (or equivalent).
- b. Carcass, manufactured board, minimum of 18mm thickness with high pressure applied laminate on both faces, edged in pressure applied matching 2mm thick ABS, rigid doweled construction.
- c. Backing board, manufactured board, minimum 8mm thickness set into carcass back.
- d. 5 or 6 no. fixed shelf, manufactured board, minimum of 18mm thickness with high pressure applied laminate on both faces, edged in pressure applied matching 2mm thick ABS.
- e. Plinth, laminated manufactured board, 15mm thickness, set into carcass.

Dimensions (mm)

1050 W x 455 D x Various Heights

Warranty: 10 years



COLOUR OPTIONS: **Carcass:** White or grey **Doors :** White, Light Grey, Dark Grey

NB Other colours available on request. Multiple tray colour options.

Practical rooms

Wall cupboard (with 2 doors)

Compliant with DFE specification:

- a. Fully compliant with BS EN 16121:2013+A1:2017.
- b. Carcass, manufactured board, minimum 18mm thickness with high pressure applied laminate on both faces, edged in pressure applied matching 2mm thick ABS, rigid dowelled construction.
- c. Backing board, minimum 8mm thickness MFC set into carcass back, removable.
- d. 1 no. shelf, minimum of 18mm thickness manufactured board with high pressure applied laminate on both faces, edged in pressure applied matching 2mm thick ABS, mounted on minimum of 4 no. 5mm steel pins housed in pre-drilled holes in carcass.
- e. Doors laminated manufactured board, minimum of 18mm thickness edged in pressure applied 2mm thick ABS, option of lock with master keys.
- f. 3no. 270° exposed corrosion resistant proof knuckle hinges with through fixed hinge plates.

Dimensions (mm)

1050 W x 455 D x Various Heights

Locks are available as an option.

Warranty: 10 years



COLOUR OPTIONS: **Carcass:** White or grey **Doors :** White, Light Grey, Dark Grey

NB Other colours available on request. Multiple tray colour options.

Practical rooms

Wall shelving with supports

Compliant with DFE specification:

- a. 3 no. shelves, manufactured board, minimum 18mm thickness with high pressure applied laminate on both faces, edged in pressure applied matching 2mm thick ABS.
- b. Uprights EPC steel, various lengths.
- c. Brackets EPC steel, various depths.

3 x Shelves 100mm W x 300mm D

Warranty: 10 years



COLOUR OPTIONS: **Shelves:** White or Light Grey, **Shelf brackets and uprights:** White

Science laboratory

Pedestal unit (dry)

Compliant with DFE specification:

- a. Fully compliant with BS EN EN14056:2003.
- b. Fully compliant with BS EN 13150: 2001.
- c. Minimum 16mm solid grade laminate, with moisture, heat (up to 180°) and chemical resistance.
- d. Edges chamfered and polished smooth.
- e. Steel frame, epoxy powder coating with adjustable height levelling feet.
- f. Top mounted 4 no. two way gas outlets, 4 no. twin gang 13 amp sockets (housing boxes)
- g. 1 no. access panel with cup and screws.
- h. 150mm plinth with ventilation holes.
- i. Open base for services access with pre-drilled holes for min 4no. heavy duty floor bolts.

Dimensions (mm)

600 W x 600 D x 850 H

Warranty:

Carcass / frame 25 years
Services 10 years



COLOUR OPTIONS: Finishes to match perimeter benching

Science laboratory

Pedestal unit (wet and dry)

Compliant with DFE specification:

- a. Fully compliant with BS EN EN14056:2003.
- b. Fully compliant with BS EN 13150: 2001.
- c. Minimum 16mm solid grade laminate, with moisture, heat (up to 180°) and chemical resistance.
- d. Edges chamfered and polished smooth.
- e. Steel frame, epoxy powder coating with adjustable height levelling feet.
- f. Top mounted 4 no. two way gas outlets, 4 no. twin gang 13 amp sockets (cut-outs)
- g. 1 no. access panel with cup and screws.
- h. 150mm plinth with ventilation holes.
- i. Cast epoxy resin or ceramic underslung sink with standpipe overflow, rear outlet, single fixed swan neck cold water tap with removable serrated nozzle and vulcathene bottle trap.
- j. 1 no. access panel with cup and screws.
- k. Open base for services access with pre-drilled holes for min 4no. heavy duty floor bolts.

Dimensions (mm)

600W x 600 D x Various Heights

Warranty:

Carcass / frame 25 years
Services 10 years



COLOUR OPTIONS: Finishes to match perimeter benching

Science laboratory

Teachers Bench

Teacher 'L' shaped serviced demo desk (wet and dry) or Teacher serviced bollard (wet and dry)

Compliant with DFE specification:

- a. Fully compliant with BS EN EN14056:2003 .
- b. Fully compliant with BS EN 13150: 2001.
- c. Minimum 16mm solid grade laminate, with moisture, heat (up to 180°) and chemical resistance.
- d. Edges chamfered and polished smooth.
- e. Square section steel frame, epoxy powder coating with adjustable height levelling feet.
- f. Top mounted 4 no. two way gas outlets, 4 no. twin gang 13 amp sockets, 2 no. data sockets.
- g. 1 no. access panel with cup and screws.
- h. 150mm plinth with ventilation holes.
- i. Cast epoxy resin or ceramic underslung sink with standpipe overflow, rear outlet, single fixed swan neck cold water tap with removable serrated nozzle and vulcathene bottle trap.

Dimensions (mm)

1800 W x 1800 D x 850 H

600 W x 600 D x Various Heights

Warranty:

Carcass / frame 25 years

Services 10 years



COLOUR OPTIONS: Finishes to match perimeter benching

Other spaces

4 door locker

Compliant with DFE specification:

- a. Fully compliant with BS 4680: 1996.
- b. Epoxy powder coated steel/solid grade laminate, with vents.
- c. Antibacterial coating.
- d. Where doors are steel, double-skinned and welded.
- e. Base tray- 150mm steel stand included.
- f. Sloping top.

Dimensions (mm)

300 W x 300 D x 1800 H

Warranty: 5 years



SLOPING TOP



STEEL STAND

COLOUR OPTIONS: Various colour options on carcasses & door fronts

Bramley

Units 5 & 7 Bramley Business Park,
Railsfeld Rise, Bramley, Leeds, LS13
3SA T: 0113 255 9555

Macclesfield

Brunel Road, Lyme Green Business Park,
Macclesfield, SK11 0TA
T: 01625 431979

Bolton

Interiors House, 2 Cranfield Road,
Lostock, Bolton, BL6 4SB
T: 01204 691008

Leeds

Green Sand Foundry,
99 Water Lane, Leeds, LS11 5QN
T: 0113 220 6000

